

VOR/DME ESL <b>110.8</b> Chan <b>45</b>	APP CRS <b>213°</b>	Rwy Idg TDZE Apt Elev <b>N/A</b> <b>N/A</b> <b>963</b>
---	------------------------	---

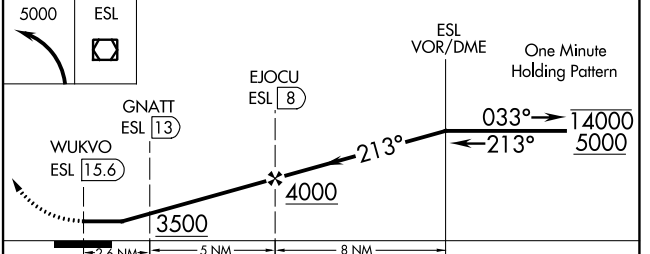
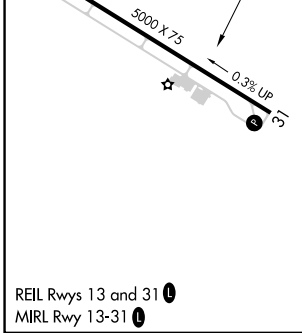
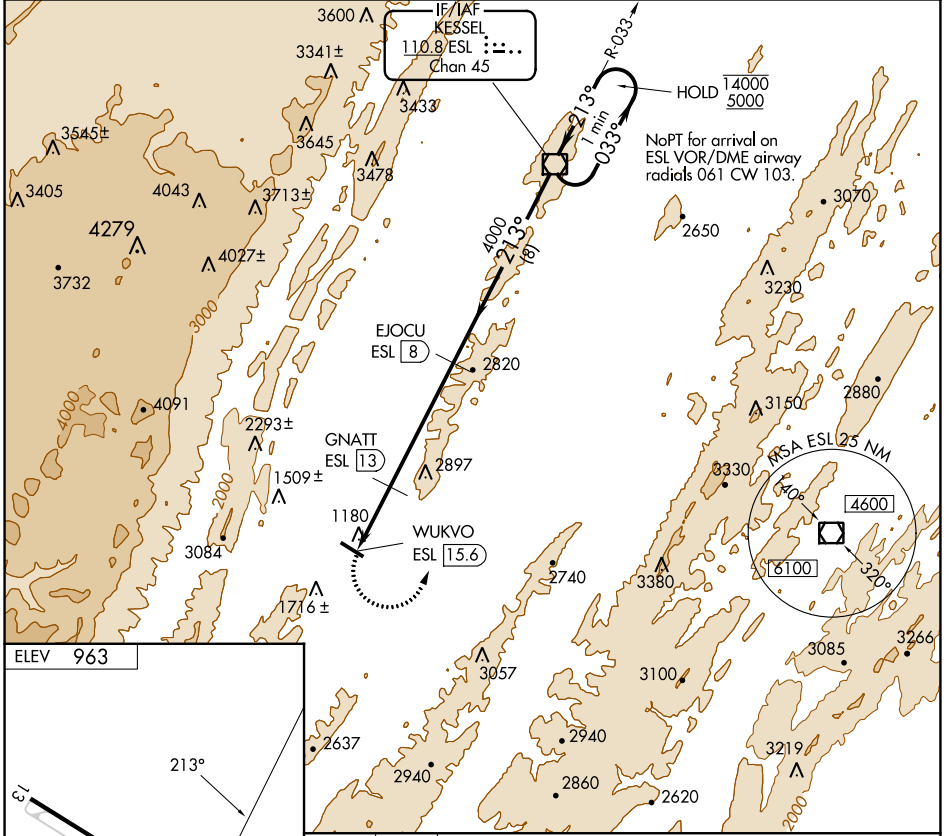
# VOR/DME-A

GRANT COUNTY (W99)

-8°C

MISSED APPROACH: Climbing left turn to 5000 direct ESL VOR/DME and hold.

AWOS-3 <b>124.475</b>	WASHINGTON CENTER <b>133.55 322.55</b>	UNICOM <b>122.8 (CTAF)</b>
--------------------------	---	-------------------------------



CATEGORY	A		B		C		D	
	CIRCLING	3100-1¼	2137 (2200-1¼)	3100-1½	2137 (2200-1½)	NA		

NE-4, 22 FEB 2024 to 21 MAR 2024

NE-4, 22 FEB 2024 to 21 MAR 2024