

APP CRS 279°
Rwy Idg 3753
TDZE 1063
Apt Elev 1070

RNAV (GPS) RWY 28

YOUNGSTOWN ELSER METRO (4G4)

RNP APCH - GPS.

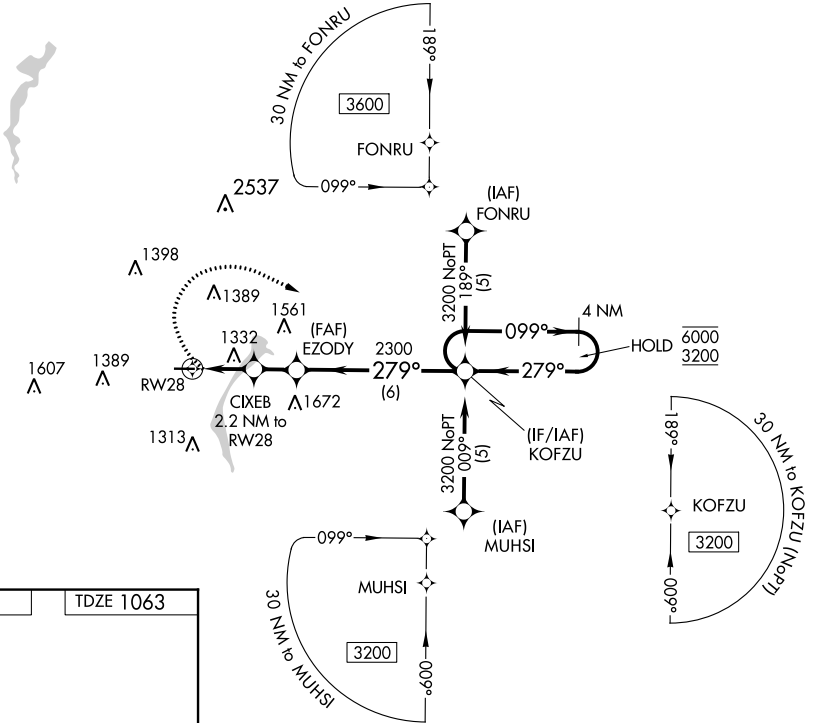
Procedure NA at night. Rwy 28 helicopter visibility reduction below 1 SM NA. Obtain local altimeter setting on CTAF; when not received, use New Castle altimeter setting and increase all MDA 40 feet.

MISSED APPROACH: Climbing right turn to 3200 direct KOFZU and hold.

CLEVELAND APP CON*
125.5 371.875

CLNC DEL
119.25

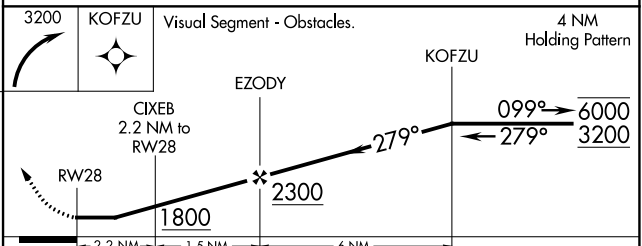
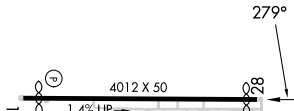
UNICOM
123.05 (CTAF)



EC-2, 22 FEB 2024 to 21 MAR 2024

EC-2, 22 FEB 2024 to 21 MAR 2024

ELEV 1070 TDZE 1063



CATEGORY	A	B	C	D
LNAV MDA	1600-1	537 (600-1)	NA	
CIRCLING	1660-1	590 (600-1)	NA	

MIRL Rwy 10-28
REIL Rwys 10 and 28