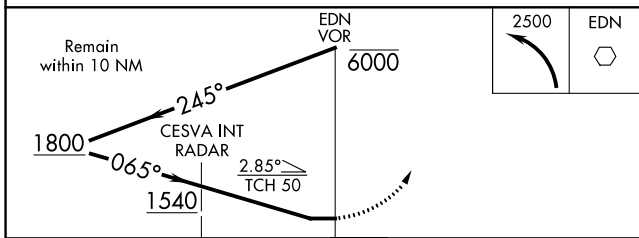
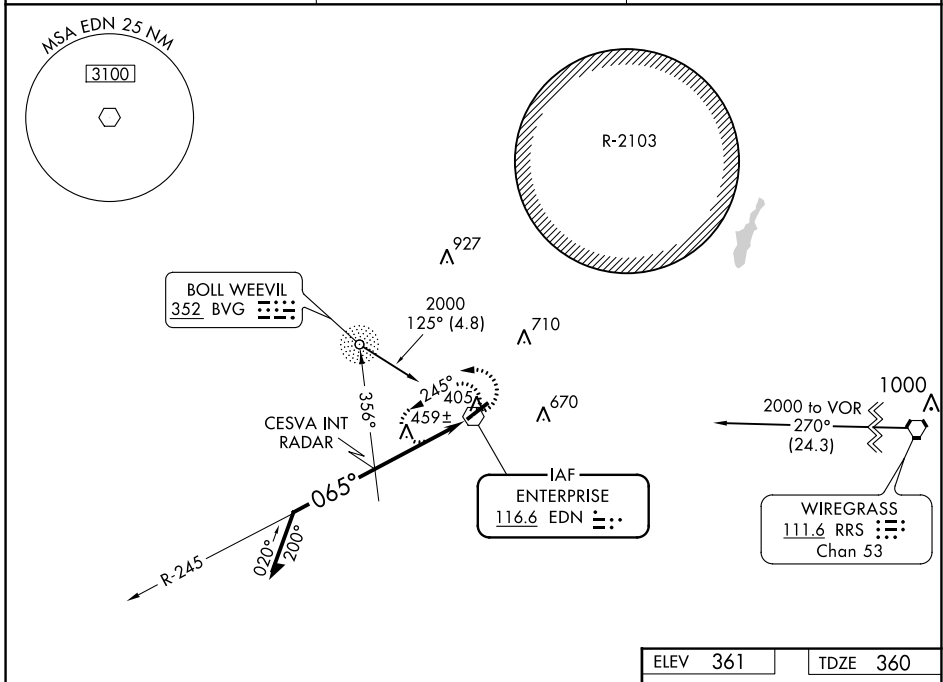


VOR EDN <b>116.6</b>	APP CRS <b>065°</b>	Rwy Idg <b>5080</b>
		TDZE <b>360</b>
		Apt Elev <b>361</b>

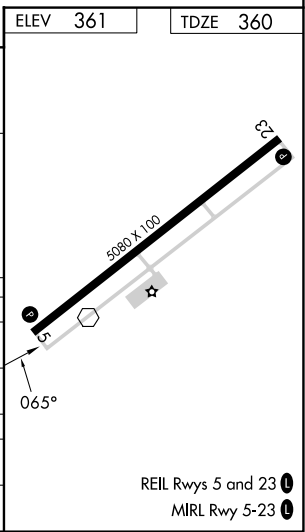
# VOR RWY 5

ENTERPRISE MUNI (EDN)

<p><b>▽</b> ADF or RADAR required.</p> <p><b>▲</b> NA Use Cairns AAF (Fort Novosel) altimeter setting.</p>	<p><b>MISSED APPROACH:</b> Climbing left turn to 2500 in EDN VOR holding pattern.</p>
<p>AWOS-3PT <b>118.9</b></p>	<p>CAIRNS APP CON * <b>133.45 239.275</b></p>
<p>UNICOM <b>122.8 (CTAF) 0</b></p>	



CATEGORY	A	B	C	D
S-5	1540-1¼ 1180 (1200-1¼)	1540-1½ 1180 (1200-1½)	1540-3 1180 (1200-3)	NA
CIRCLING	1540-1¼ 1179 (1200-1¼)	1540-1½ 1179 (1200-1½)	1540-3 1179 (1200-3)	NA
CESVA INT/RADAR MINIMUMS				
S-5	820-1	460 (500-1)	820-1¼ 460 (500-1¼)	NA
CIRCLING	920-1	559 (600-1)	1100-2 739 (800-2)	NA



SE-4, 22 FEB 2024 to 21 MAR 2024

SE-4, 22 FEB 2024 to 21 MAR 2024