

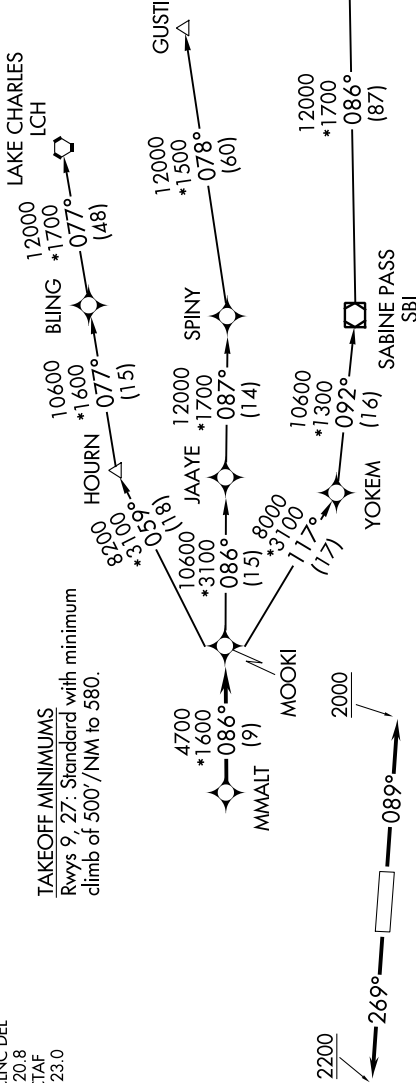
MMALT SEVEN DEPARTURE (RNAV)

SC-5, 22 FEB 2024 to 21 MAR 2024

HOUSTON DEP CON
 123.8 257.7
 AWOS-3
 123.625
 CLNC DEL
 120.8
 CTAF
 123.0

RNAV 1 - DME/DME/IRU or GPS.
 RADAR required.

TAKEOFF MINIMUMS
 Rwy 9, 27: Standard with minimum
 climb of 500'/NM to 580.



W.S.A. AXH 25 NM

3100



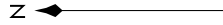
**TOP ALTITUDE:
ASSIGNED BY ATC**

NOTE: GUSTI and LCH Transitions ATC assigned only for aircraft departing AXH, EFD, GLS, HPY, IWS, LBX, LVJ, SGR, TME, T00, T41 and 54T.

DEPARTURE ROUTE DESCRIPTION

TAKEOFF RUNWAY 9: Climb on heading 089° to 2000, for RADAR vectors to MMALT, thence. . . .
TAKEOFF RUNWAY 27: Climb on heading 269° to 2200, for RADAR vectors to MMALT, thence. . . .
 . . . on track 086° to MOOKI, then on (transition). Maintain ATC assigned altitude.
 Expect filed altitude 10 minutes after departure.

- GUSTI TRANSITION (MMALT7.GUSTI)
- LAKE CHARLES TRANSITION (MMALT7.LCH)
- WHITE LAKE TRANSITION (MMALT7.LLA)



NOTE: Chart not to scale.

SC-5, 22 FEB 2024 to 21 MAR 2024