

WAAS CH 45633 W34A	APP CRS 344°	Rwy Idg TDZE Apt Elev	4500 1304 1304
--------------------------	-----------------	-----------------------------	----------------------

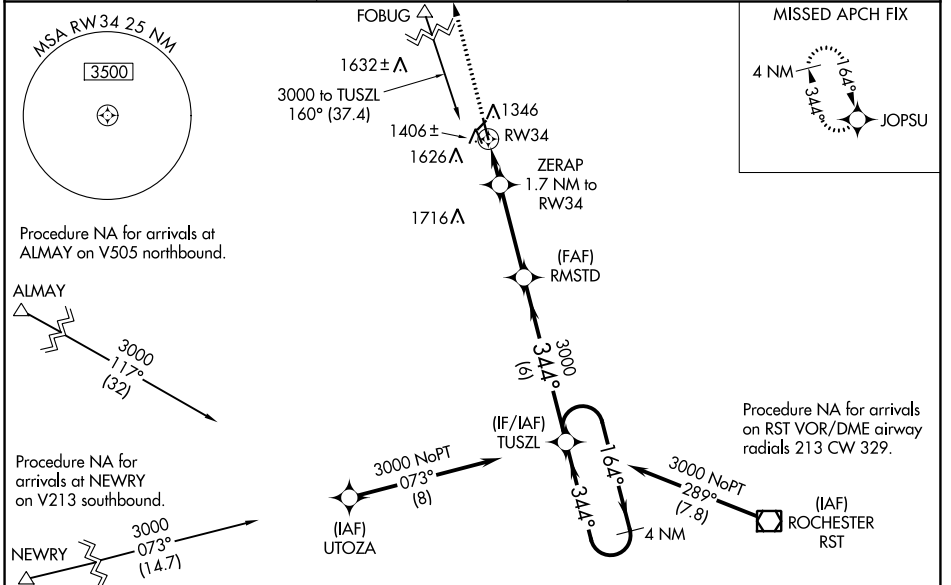
RNAV (GPS) RWY 34

DODGE CENTER (TOB)

⚠ Baro-VNAV NA when using Rochester Intl altimeter setting. For uncompensated Baro-VNAV systems, LNAV/VNAV NA below -17°C (2°F) or above 54°C (130°F). DME/DME RNP-0.3 NA. When local altimeter setting not received, use Rochester Intl altimeter setting and increase all DA 39 feet and all MDA 40 feet, and increase LNAV Cat C visibility 1/8 mile and Circling Cat C visibility 1/4 mile. Rwy 34 Straight-in and Circling minimums NA at night.

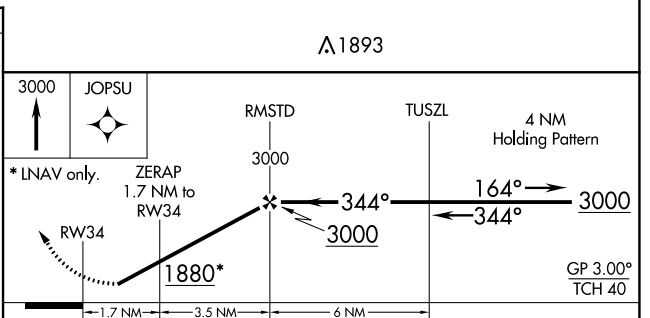
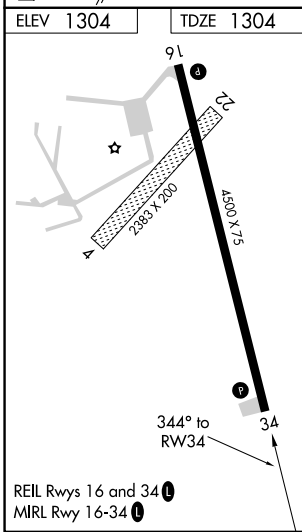
MISSED APPROACH: Climb to 3000 direct JOPSU and hold.

AWOS-3 119.075	ROCHESTER APP CON ★ 119.8 251.125	CTAF 122.9
--------------------------	---	----------------------



NC-1, 22 FEB 2024 to 21 MAR 2024

NC-1, 22 FEB 2024 to 21 MAR 2024



CATEGORY	A	B	C	D
LPV DA	1554-1	250 (300-1)		NA
LNAV/VNAV DA	1556-1	252 (300-1)		NA
LNAV MDA	1660-1	356 (400-1)		NA
C CIRCLING	1960-1	656 (700-1)	1960-1 3/4 656 (700-1 3/4)	NA