

APP CRS	Rwy Idg	3304
012°	TDZE	40
	Apt Elev	41

RNAV (GPS) RWY 1

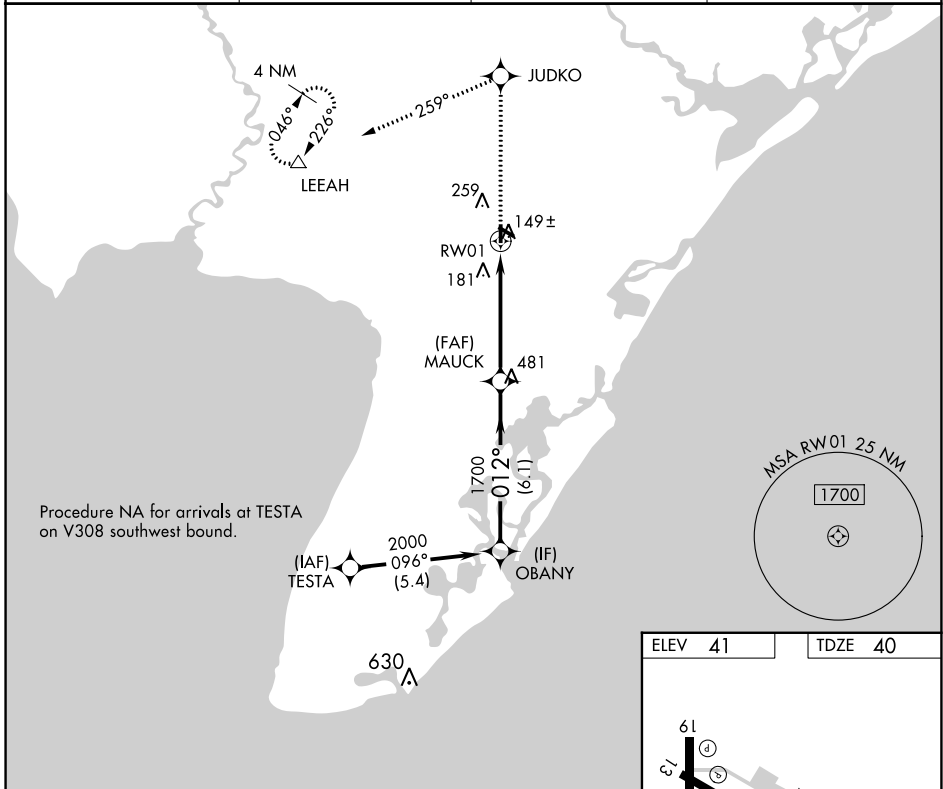
WOODBINE MUNI (OBI)

RNP APCH

NA When local altimeter setting not received, use Millville Muni altimeter setting and increase all MDA 60 feet, and increase LNAV and Circling Cat C visibility 1/4 mile. VDP NA when using Millville Muni altimeter setting. Circling Rwy 13, 19, 31 NA at night. Rwy 1 helicopter visibility reduction below 3/4 SM NA.

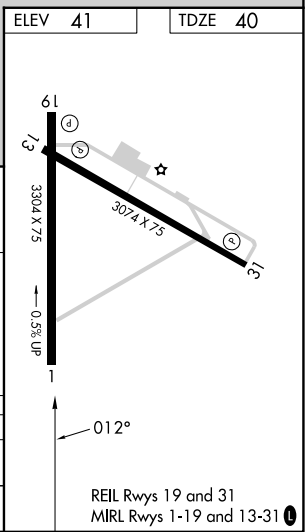
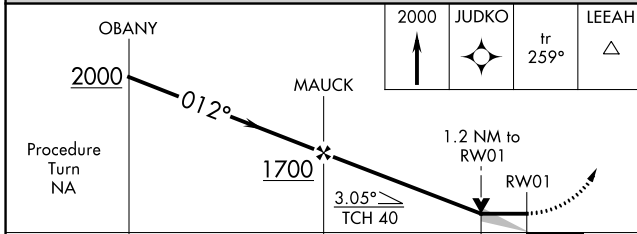
MISSED APPROACH: Climb to 2000 direct JUDKO and on track 259° to LEEAH and hold.

AWOS-3 120.475	ATLANTIC CITY APP CON 124.6 327.125	GCO 121.725	UNICOM 123.05 (CTAF) 0
--------------------------	---	-----------------------	----------------------------------



NE-2, 22 FEB 2024 to 21 MAR 2024

NE-2, 22 FEB 2024 to 21 MAR 2024



CATEGORY	A	B	C	D
LNAV MDA	440-1	400 (400-1)	440-1 1/8 400 (400-1 1/8)	NA
CIRCLING	620-1	579 (600-1)	620-1 1/2 579 (600-1 1/2)	NA