

WAAS CH <b>82226</b> <b>W16A</b>	APP CRS <b>164°</b>	Rwy Idg TDZE Apt Elev	<b>3502</b> <b>1277</b> <b>1279</b>
--	------------------------	-----------------------------	---

# RNAV (GPS) RWY 16

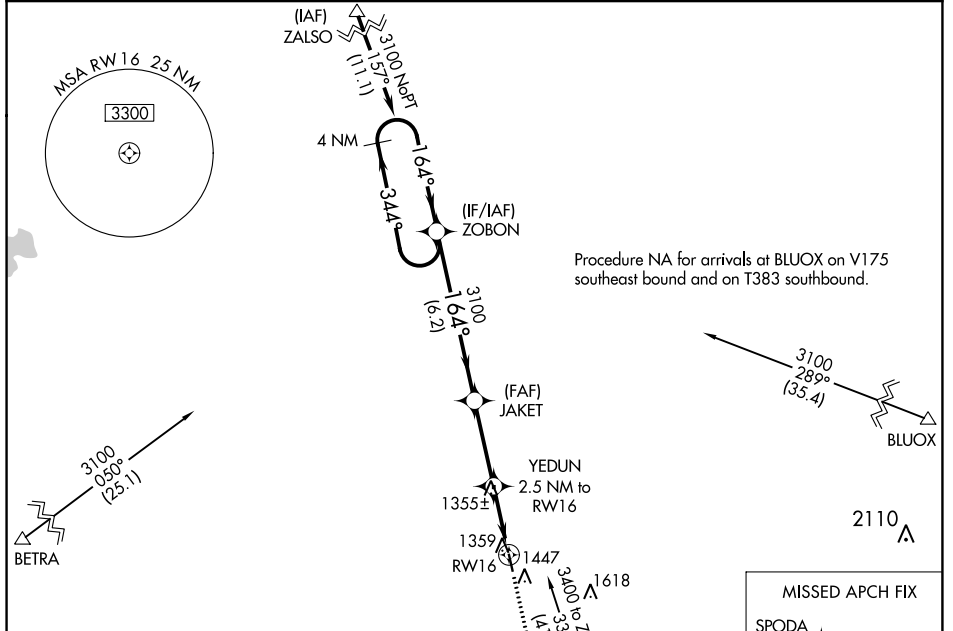
FOSSTON MUNI/ANDERSON FLD (F'S'E)

RNP APCH.

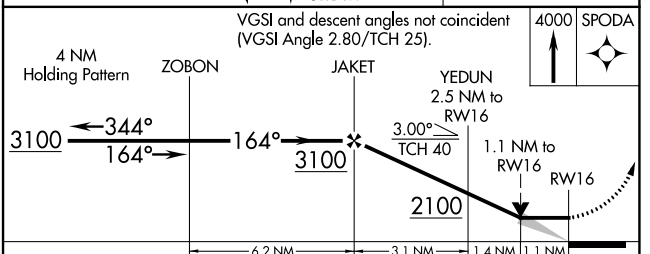
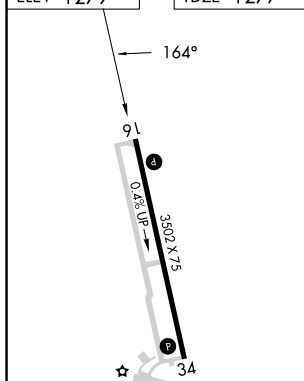
**⚠** VDP NA with Thief River Falls altimeter setting. When local altimeter setting not received, use Thief River Falls altimeter setting and increase all MDA 100 feet and increase LP and LNAV Cat C visibility  $\frac{3}{8}$  SM, Circling Cat C visibility  $\frac{1}{2}$  SM.

**⚠** MISSED APPROACH: Climb to 4000 direct SPODA and hold.

AWOS-3 <b>118.35</b>	MINNEAPOLIS CENTER <b>134.75 251.1</b>	GCO <b>121.725</b>	CTAF <b>122.9</b>
-------------------------	---	-----------------------	----------------------



ELEV 1279	TDZE 1277
-----------	-----------



CATEGORY	A	B	C	D
LP MDA	1620-1	343 (400-1)		NA
LNAV MDA	1640-1	363 (400-1)		NA
CIRCLING	1860-1	581 (600-1)	1860-1½ 581 (600-1½)	NA

NC-1, 22 FEB 2024 to 21 MAR 2024

NC-1, 22 FEB 2024 to 21 MAR 2024