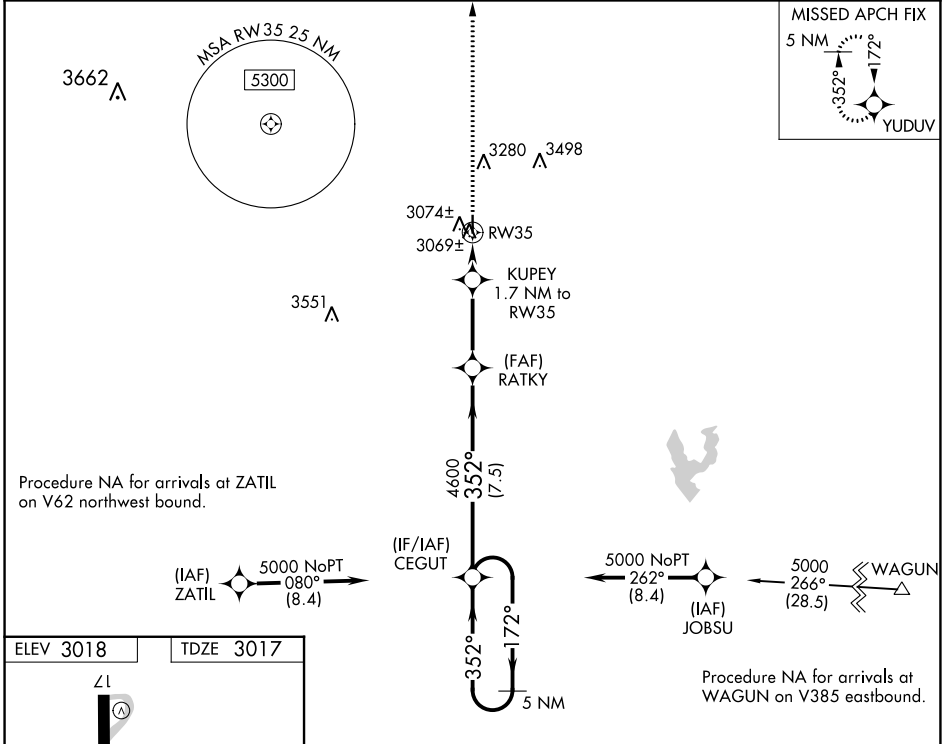


WAAS CH <b>53423</b> <b>W35A</b>	APP CRS <b>352°</b>	Rwy Idg TDZE Apt Elev	<b>3600</b> <b>3017</b> <b>3018</b>
--	------------------------	-----------------------------	---

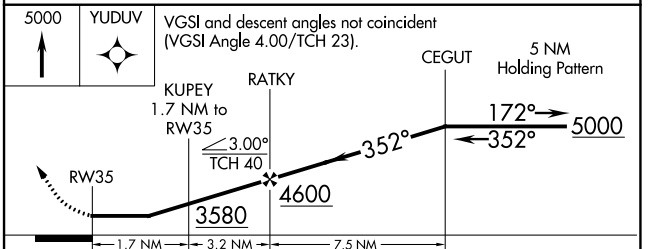
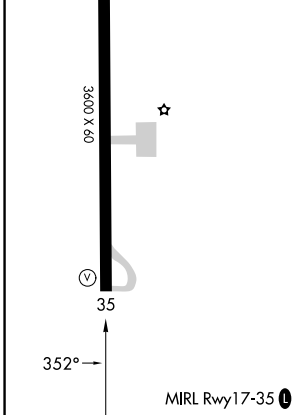
# RNAV (GPS) RWY 35

CROSBYTON MUNI (8F3)

RNP APCH.	<p>▼ Use Lubbock altimeter setting. Procedure NA at night.</p> <p>▲ NA Rwy 35 helicopter visibility reduction below 1 SM NA.</p>	MISSED APPROACH: Climb to 5000 direct YUDUV and hold.
LBB ASOS <b>125.3</b>	LUBBOCK APP CON <b>119.2 351.8</b>	UNICOM <b>122.8 (CTAF) 0</b>



ELEV 3018	TDZE 3017
-----------	-----------



CATEGORY	A	B	C	D
LP MDA	3440-1	423 (500-1)	3440-1¼ 423 (500-1¼)	NA
LNAV MDA	3440-1	423 (500-1)	3440-1¼ 423 (500-1¼)	NA
CIRCLING	3500-1 482 (500-1)	3740-1 722 (800-1)	3920-2¾ 902 (1000-2¾)	NA

SC-2, 22 FEB 2024 to 21 MAR 2024

SC-2, 22 FEB 2024 to 21 MAR 2024