

APP CRS	Rwy Idg	<b>5001</b>
<b>088°</b>	TDZE	<b>1389</b>
	Apt Elev	<b>1395</b>

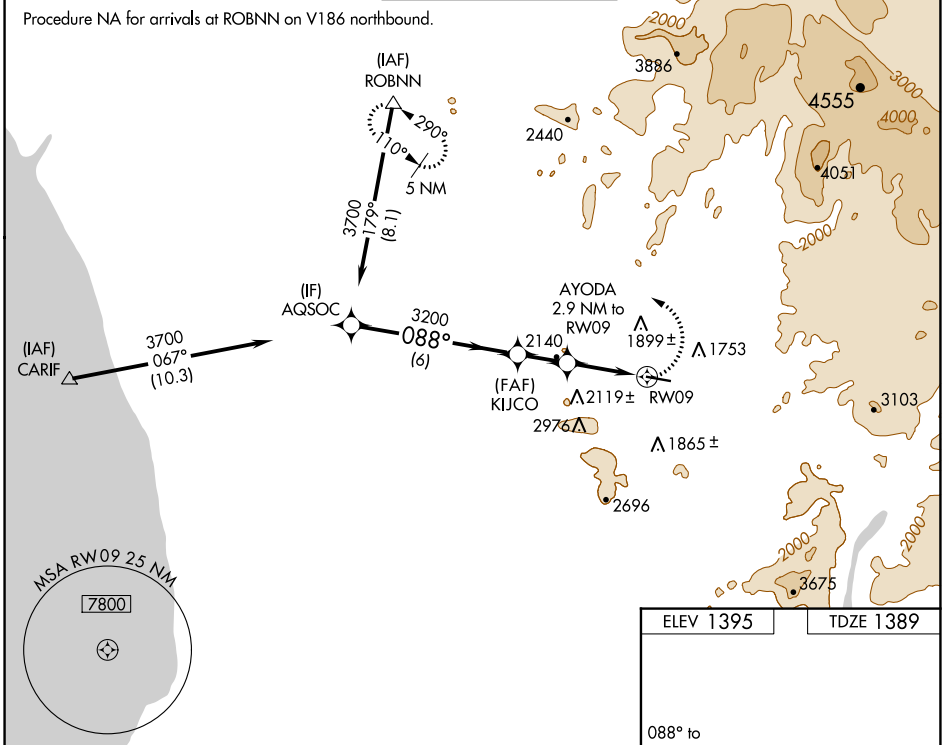
# RNAV (GPS) RWY 9

RAMONA (R.NM)

**⚠** Circling NA north of Rwy 9-27. Circling NA for Cat C when using Gillespie Fld altimeter setting. DME/DME RNP -0.3 NA. LNAV minima NA when using Gillespie Fld altimeter setting. When local altimeter setting not received, use Gillespie Fld altimeter setting and increase all Circling MDA 180 feet and increase Circling visibility Cat B ¼ SM. Helicopter visibility reduction below ¾ SM NA.

MISSED APPROACH: Climbing left turn to 5000 direct ROBNN and hold.

ATIS <b>132.025</b>	SOCAL APP CON <b>132.2 269.1</b>	RAMONA TOWER ★ <b>119.875 (CTAF) 0</b>	GND CON <b>121.65</b>	UNICOM <b>122.95</b>
------------------------	-------------------------------------	---	--------------------------	-------------------------



SW-3, 22 FEB 2024 to 21 MAR 2024

SW-3, 22 FEB 2024 to 21 MAR 2024

	ELEV 1395	TDZE 1389
--	-----------	-----------

\* 2700 when using Gillespie Fld altimeter setting.

Procedure Turn NA	AQSOC	KIJCO	AYODA	RW09
	3700	3200	*2520	5001
	088°	3.54°	2.2°	
	6 NM	1.8 NM	0.7 NM	2.2 NM

CATEGORY	A	B	C	D
LNAV MDA	2240-1 851 (900-1)	2240-1¼ 851 (900-1¼)	2240-2½ 851 (900-2½)	NA
CIRCLING	2240-1¼	845 (900-1¼)	3180-3 1785 (1800-3)	NA

REIL Rwy 27 0  
MIRL Rwy 9-27 0