

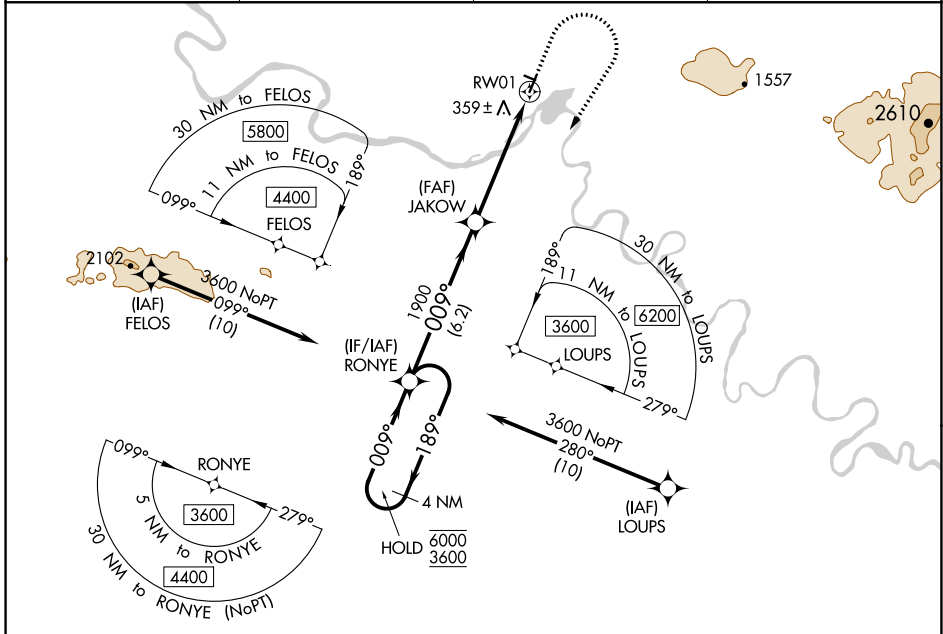
WAAS CH <b>40439</b> <b>W01A</b>	APP CRS <b>009°</b>	Rwy Idg TDZE Apt Elev	<b>4000</b> <b>268</b> <b>293</b>
--	------------------------	-----------------------------	---

# RNAV (GPS) RWY 1

AMBLER (AFM) (PAFM)

RNP APCH.	MISSED APPROACH: Climb to 1000 then climbing right turn to 3600 direct RONYE and hold, continue climb-in-hold to 3600. # Missed approach requires minimum climb of 210 feet per NM to 2300.
<p>                     Circling NA west of Rwy 1-19. For uncompensated Baro-VNAV systems, LNAV/VNAV NA below -20°C or above 42°C.                      -37°C                 </p>	

AWOS-3P <b>132.1</b>	ANCHORAGE CENTER <b>119.2 263.0</b>	KOTZEBUE RADIO <b>122.0</b>	CTAF <b>122.7 0</b>
-------------------------	--	--------------------------------	------------------------



AK, 25 JAN 2024 to 21 MAR 2024

AK, 25 JAN 2024 to 21 MAR 2024

VGSI and RNAV glidepath not coincident (VGSI Angle 3.00/TCH 25). 4 NM Holding Pattern RONYE 6000 ← 189° 3600 → 009° GP 3.00° TCH 40		1000 3600 RONYE	ELEV 293 TDZE 268 MIRL Rwy 1-19 and 10-28	
4 NM Holding Pattern RONYE 6000 ← 189° 3600 → 009° GP 3.00° TCH 40		*2.3 NM to RWY 1 *LNAV only.		
CATEGORY	A	B	C	D
LPV DA#		518-1	250 (300-1)	
LPV DA		686-1 $\frac{3}{8}$	418 (400-1 $\frac{3}{8}$ )	
LNNAV/VNAV DA		811-1 $\frac{7}{8}$	543 (600-1 $\frac{7}{8}$ )	
LNNAV MDA	1000-1 732 (800-1)	1000-1 $\frac{1}{4}$ 732 (800-1 $\frac{1}{4}$ )	1000-1 $\frac{7}{8}$ 732 (800-1 $\frac{7}{8}$ )	732 (800-1 $\frac{7}{8}$ )
CIRCLING	1000-1 707 (800-1)	1000-1 $\frac{1}{4}$ 707 (800-1 $\frac{1}{4}$ )	1000-2 707 (800-2)	1000-2 $\frac{1}{4}$ 707 (800-2 $\frac{1}{4}$ )