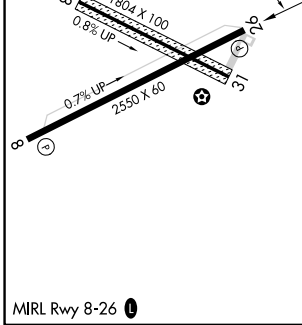
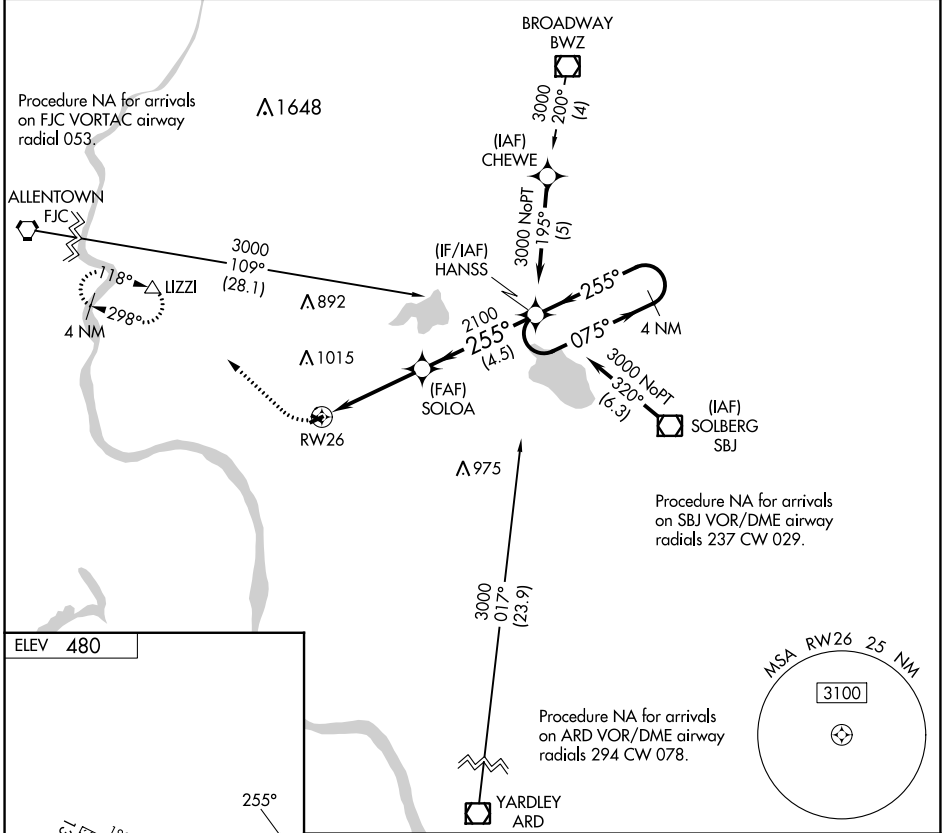


| | | |
|---------|----------|-----|
| APP CRS | Rwy Idg | NA |
| 255° | TDZE | NA |
| | Apt Elev | 480 |

RNAV (GPS)-B

ALEXANDRIA (N85)

| | | |
|----|--|--|
| NA | DME/DME RNP-0.3 NA. Use Lehigh Valley Intl, Allentown, PA altimeter setting. Procedure NA at night. Helicopter visibility reduction below 1 SM NA. | MISSED APPROACH: Climbing right turn 3000 direct LIZZI and hold. |
| | ALLENTOWN APP CON 119.65 124.45 351.8 | UNICOM 122.975 (CTAF) |



| | |
|---------------------------------------|-------------------------------|
| 3000 LIZZI | 4 NM HANSS Holding Pattern |
| RW26 SOLOA 2100 3.75° TCH 30 | 255° 075° 3000 |
| CATEGORY A | CATEGORY B C D |
| CIRCLING 1240-1 760 (800-1) | NA |

NE-2, 22 FEB 2024 to 21 MAR 2024

NE-2, 22 FEB 2024 to 21 MAR 2024