

BONHAM, TEXAS

AL-6722 (FAA)

22307

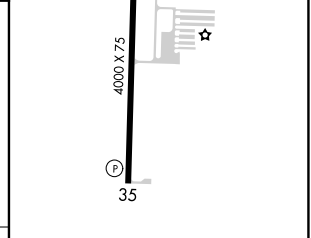
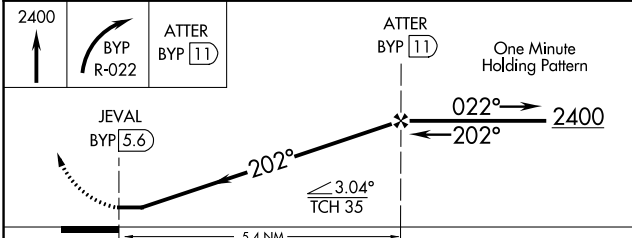
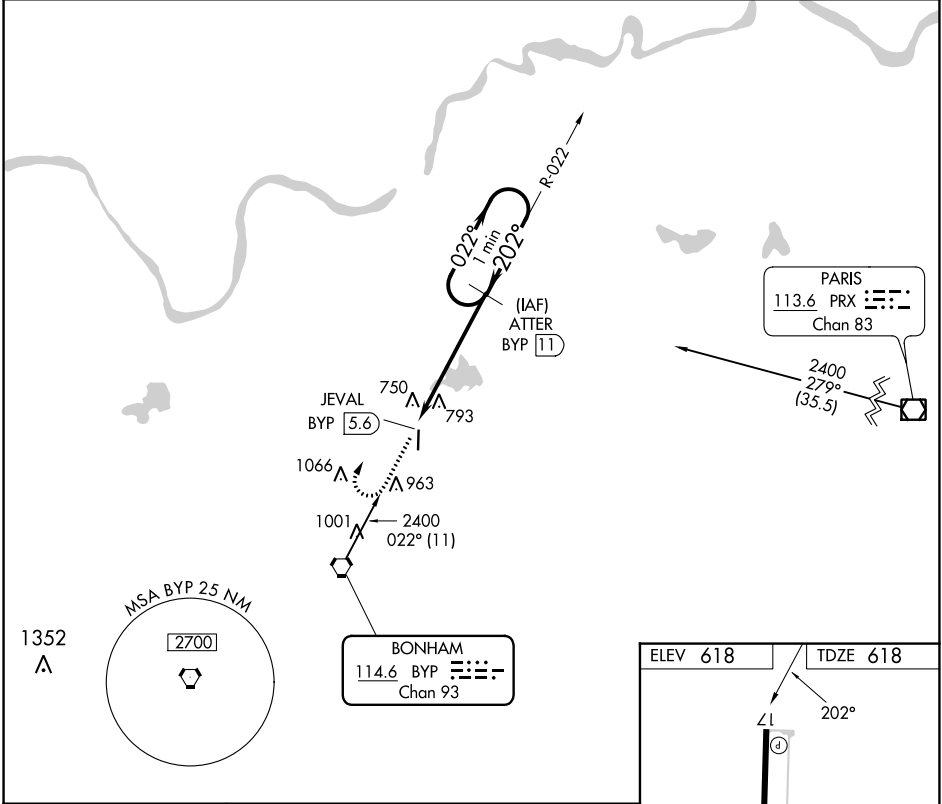
VORTAC BYP 114.6 Chan 93	APP CRS 202°	Rwy Idg TDZE 618 Apt Elev 618	4000
--	------------------------	---	-------------

VOR/DME RWY 17

JONES FLD (F00)

	When local altimeter setting not received, use Durant altimeter setting.	MISSED APPROACH: Climb to 2400, then right turn via BYP R-022 to ATTER/11 DME and hold.
	AWOS-3 PT 118.05	FORT WORTH CENTER 127.6 254.3

AWOS-3 PT 118.05	FORT WORTH CENTER 127.6 254.3	UNICOM 122.8(CTAF)
----------------------------	---	------------------------------



CATEGORY	A	B	C	D
S-17	1200-1	582 (600-1)	NA	
CIRCLING	1240-1 622 (700-1)	1400-1 782 (800-1)	NA	

MIRL Rwy 17-35

BONHAM, TEXAS
Amdt 1B 20MAY21

33°37'N-96°11'W

VOR/DME RWY 17

JONES FLD (F00)

SC-2, 22 FEB 2024 to 21 MAR 2024

SC-2, 22 FEB 2024 to 21 MAR 2024