

VORTAC SQS 114.7 Chan 94	APP CRS 145°	Rwy Idg TDZE Apt Elev	N/A N/A 340
--	------------------------	-----------------------------	--

VOR/DME or GPS-A

C A MOORE (19M)

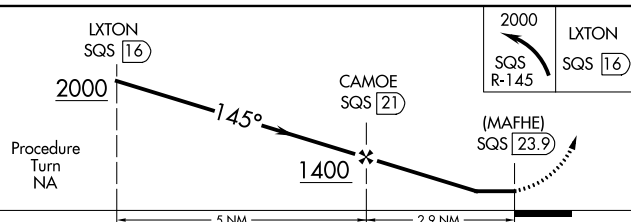
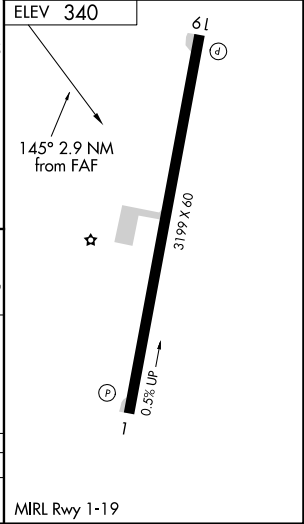
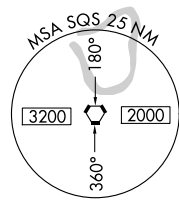
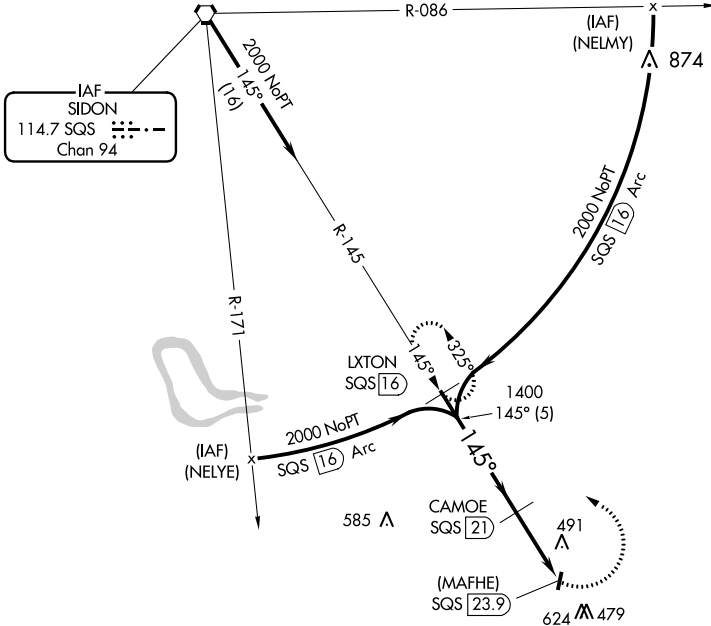
▼ Use Greenwood altimeter setting.
▲ NA Procedure NA at night.
 Helicopter visibility reduction below 1 SM NA.

MISSED APPROACH: Climbing left turn to 2000 on SQS R-145 to LXTON 16 DME and hold.

GWO ASQS
119.975

MEMPHIS CENTER
132.5 259.1

CTAF
122.9



CATEGORY	A	B	C	D
CIRCLING	920-1 580 (600-1)	960-1¼ 620 (700-1¼)	1020-2 680 (700-2)	NA

MIRL Rwy 1-19

SC-4, 22 FEB 2024 to 21 MAR 2024

SC-4, 22 FEB 2024 to 21 MAR 2024