

VOR/DME BIS <b>115.65</b> Chan <b>103(Y)</b>	APP CRS <b>260°</b>	Rwy Idg TDZE Apt Elev <b>N/A</b> <b>N/A</b> <b>1944</b>
--	------------------------	--

# VOR-A

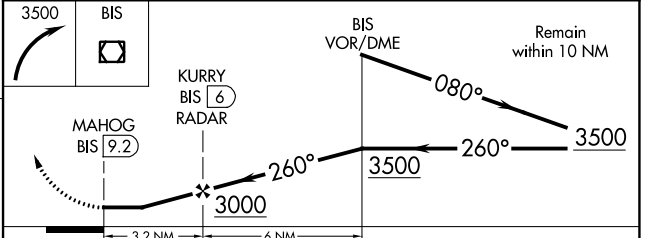
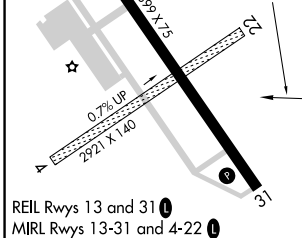
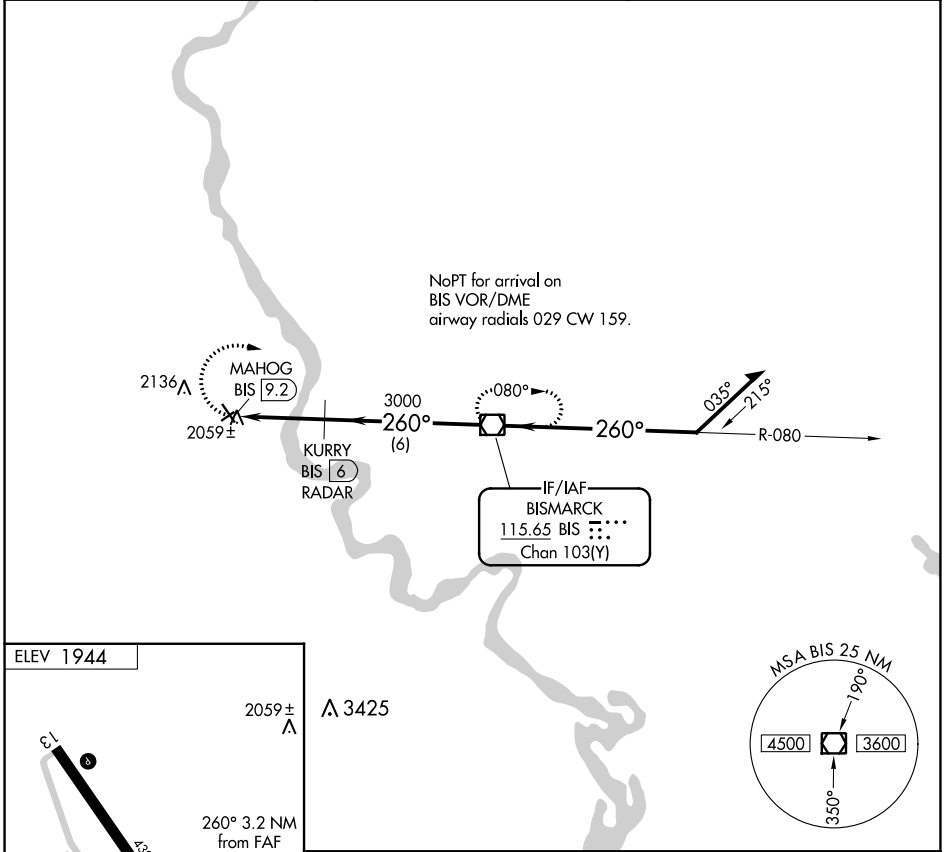
MANDAN RGNL/LAWLER FLD (Y19)

**⚠** DME or RADAR required. When local altimeter setting not received, use Bismarck altimeter setting and increase all MDA 60 feet, and Cat D visibility ¼ mile. Circling to Rwy 4 and 22 NA.

**ASR**

MISSED APPROACH: Climbing right turn to 3500 direct BIS VOR/DME and hold.

AWOS-3 <b>118,225</b>	BISMARCK APP CON ★ <b>126.3 298.9</b>	UNICOM <b>122.8 (CTAF) 0</b>
--------------------------	--	---------------------------------



FAF to MAP 3.2 NM					
Knots	60	90	120	150	180
Min:Sec	3:12	2:08	1:36	1:17	1:04
<b>0</b> CIRCLING	2360-1 416 (500-1)	2460-1 516 (600-1)	2460-1½ 516 (600-1½)	2560-2 616 (700-2)	

# VOR-A

NC-1, 22 FEB 2024 to 21 MAR 2024

NC-1, 22 FEB 2024 to 21 MAR 2024