

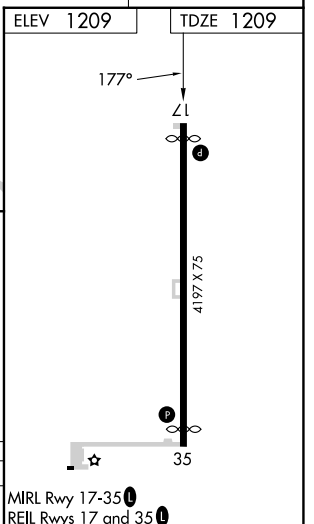
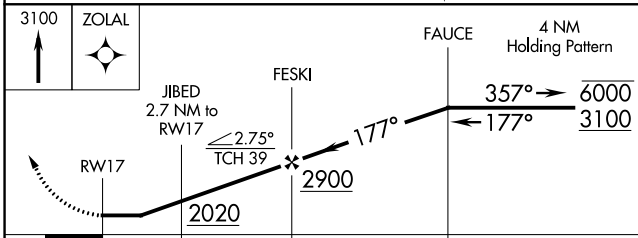
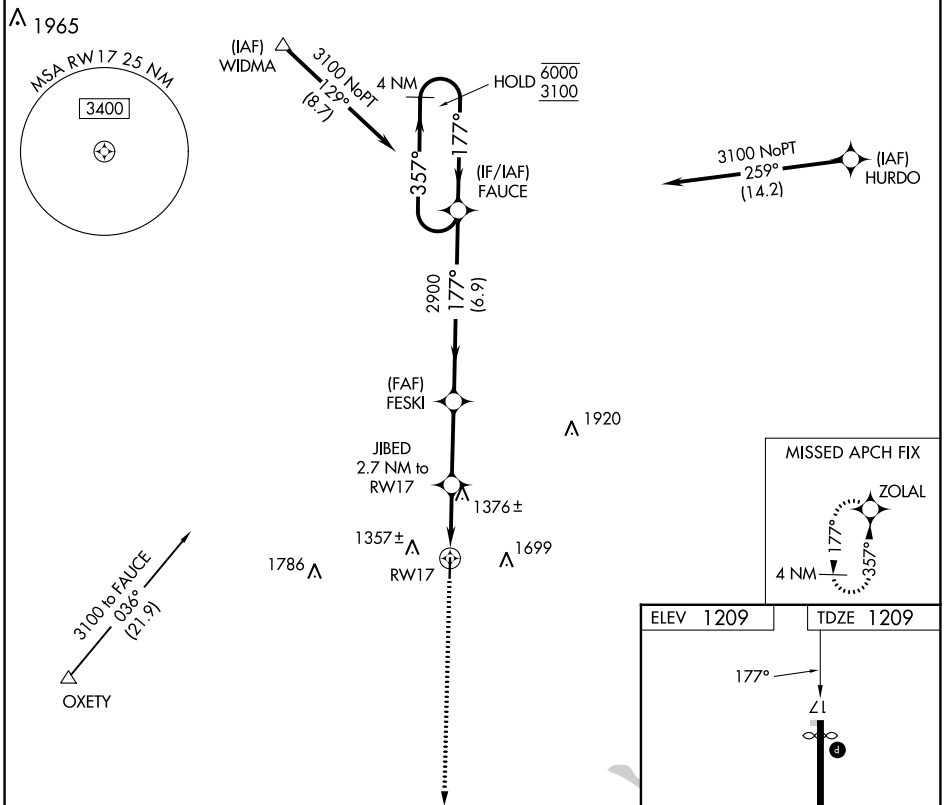
APP CRS 177°	Rwy Idg 3995
	TDZE 1209
	Apt Elev 1209

RNAV (GPS) RWY 17

CLAY CENTER MUNI (CYW)

RNP APCH.		MISSED APPROACH: Climb to 3100 direct ZOLAL and hold.
▼	Procedure NA at night. Rwy 17 helicopter visibility reduction below 1 SM NA.	
▲	NA	When local altimeter setting not received, use Salina altimeter setting and increase all MDA 120 feet and LNAV Cat C visibility 3/8 SM.

AWOS-3T 119.95	MARSHALL AAF APP CON * 121.25 254.35	UNICOM 122.8 (CTAF) 0
--------------------------	--	---------------------------------



CATEGORY	A	B	C	D
LNAV MDA	1640-1	431 (500-1)	1640-1 1/4 431 (500-1 1/4)	NA

MIRL Rwy 17-35 0
REIL Rwy 17 and 35 0

NC-2, 22 FEB 2024 to 21 MAR 2024

NC-2, 22 FEB 2024 to 21 MAR 2024