

APP CRS	Rwy Idg	4903
255°	TDZE	307
	Apt Elev	309

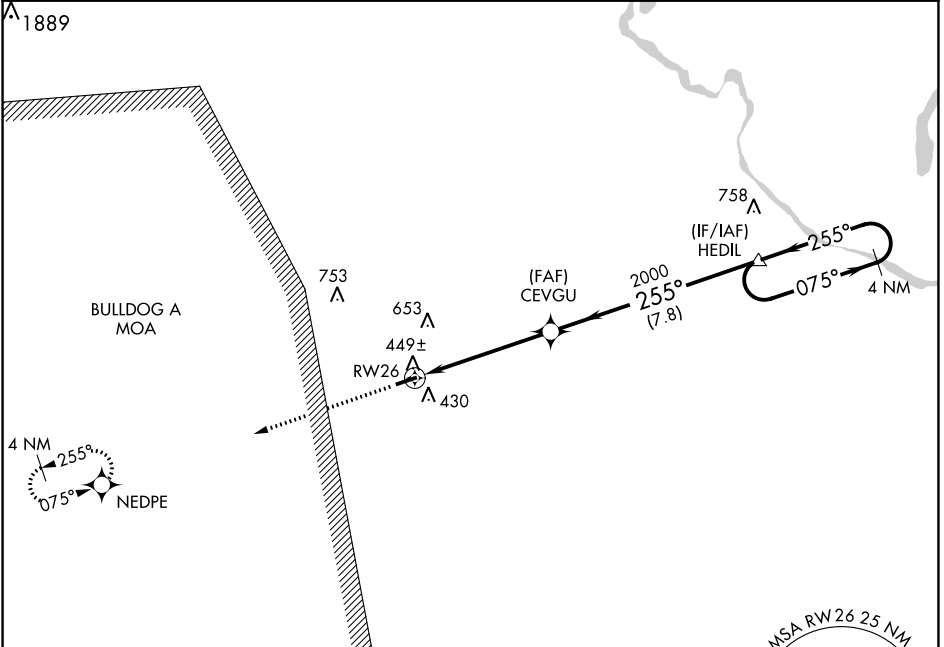
RNAV (GPS) RWY 26

BURKE COUNTY (BXXG)

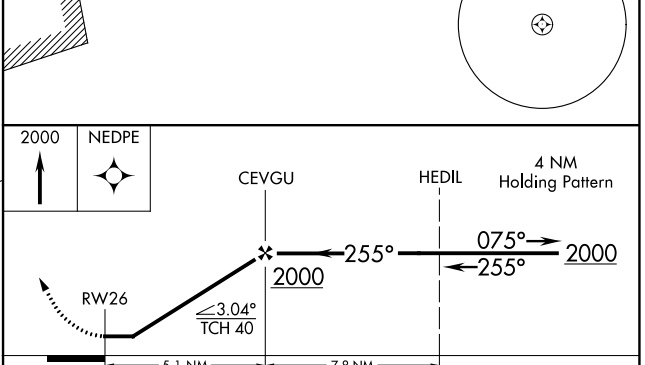
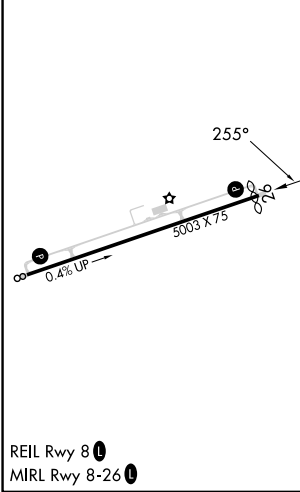
RNP APCH - GPS
 Use Augusta Rgnl at Bush Fld alimeter setting.
 Procedure NA at night.
 Rwy 26 helicopter visibility reduction below 1 SM NA.

MISSED APPROACH: Climb to 2000 direct NEDPE and hold.

AGS ASOS 132.75	AUGUSTA APP CON* 126.8 270.3	CTAF 122.9
---------------------------	--	----------------------



ELEV	309	D	TDZE	307
------	-----	----------	------	-----



CATEGORY	A	B	C	D
LNAV MDA	800-1	493 (500-1)	800-1 3/8 493 (500-1 3/8)	NA
CIRCLING	860-1 551 (600-1)	900-1 591 (600-1)	1080-2 1/4 771 (800-2 1/4)	NA

SE-4, 22 FEB 2024 to 21 MAR 2024

SE-4, 22 FEB 2024 to 21 MAR 2024