

APP CRS	Rwy Idg	5003
075°	TDZE	302
	Apt Elev	309

RNAV (GPS) RWY 8

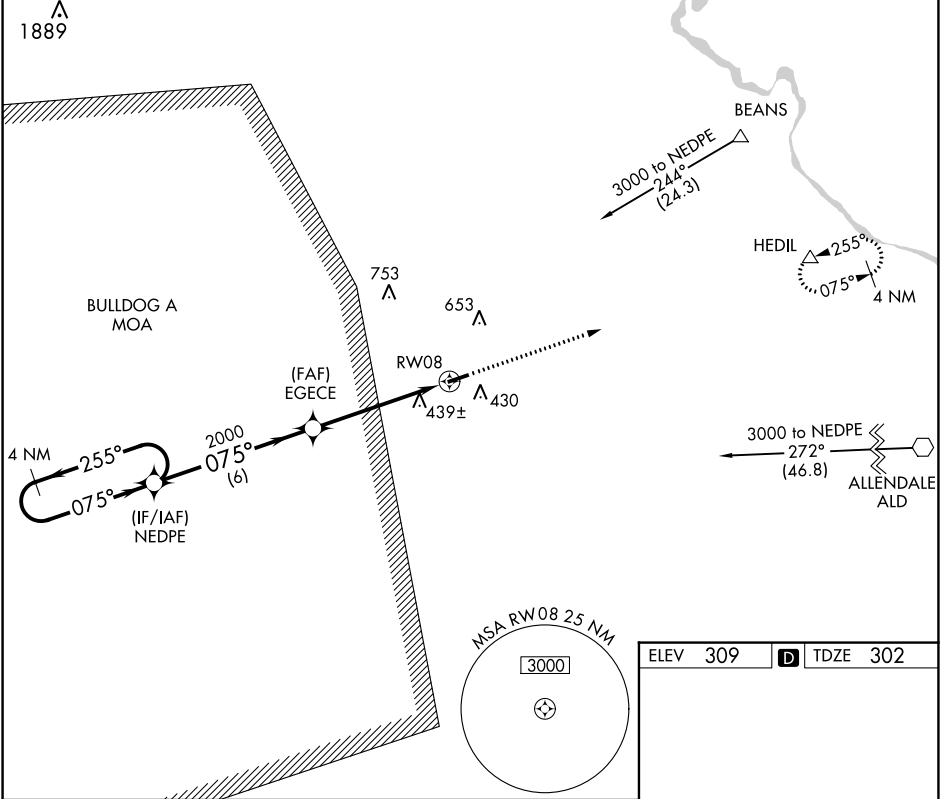
BURKE COUNTY (BXXG)

RNP APCH-GPS

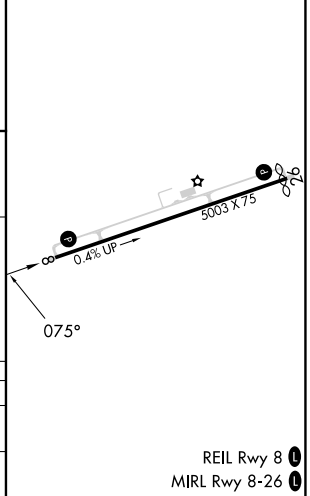
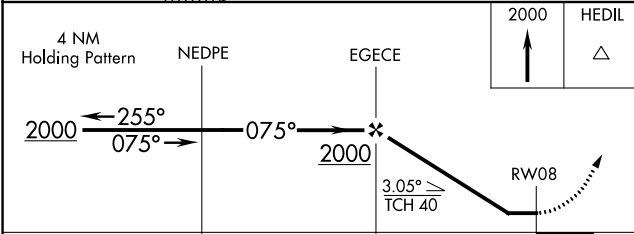
Use Augusta Rgnl at Bush Fld altimeter setting.
 Procedure NA at night.
 Rwy 8 helicopter visibility reduction below 1 SM NA.

MISSED APPROACH: Climb to 2000 direct HEDIL and hold.

AGS ASOS 132.75	AUGUSTA APP CON ★ 126.8 270.3	CTAF 122.9
---------------------------	---	----------------------



ELEV	309	TDZE	302
------	-----	------	-----



CATEGORY	A	B	C	D
LNVA MDA	800-1	498 (500-1)	800-1 $\frac{3}{8}$ 498 (500-1 $\frac{3}{8}$)	NA
CIRCLING	860-1 551 (600-1)	900-1 591 (600-1)	1080-2 $\frac{1}{4}$ 771 (800-2 $\frac{1}{4}$)	NA

REIL Rwy 8
 MIREL Rwy 8-26

SE-4, 22 FEB 2024 to 21 MAR 2024

SE-4, 22 FEB 2024 to 21 MAR 2024