

WAAS CH <b>72733</b> <b>W19A</b>	APP CRS <b>195°</b>	Rwy Idg <b>4000</b> TDZE <b>880</b> Apt Elev <b>880</b>
--	------------------------	---

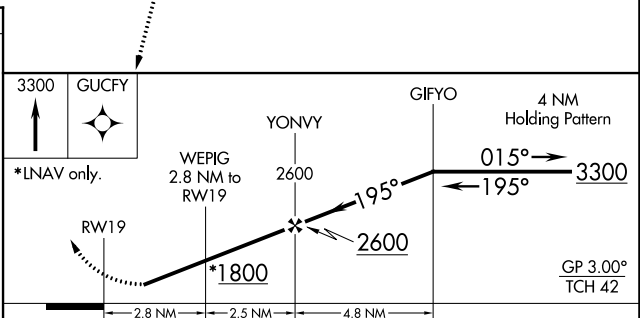
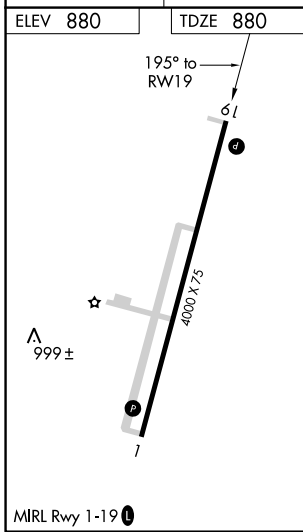
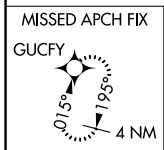
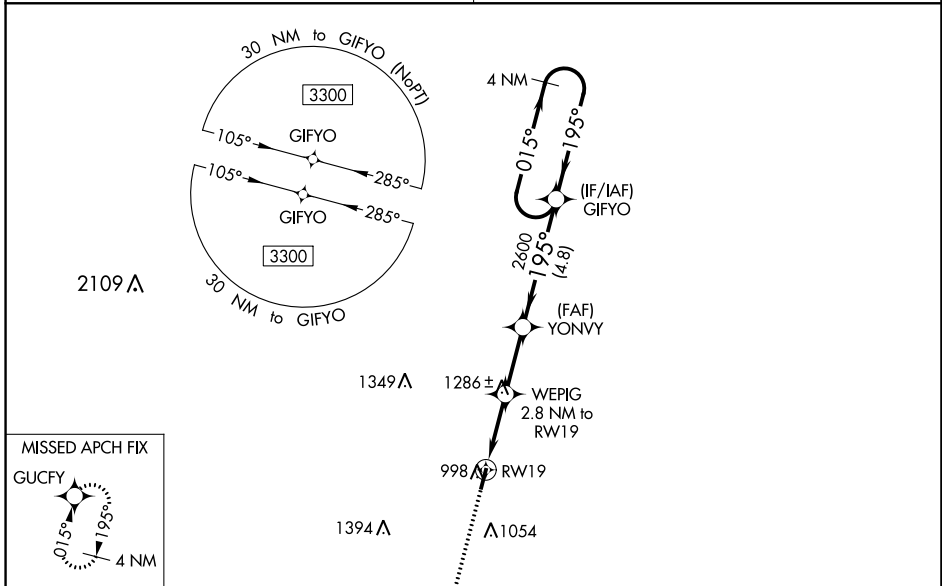
# RNAV (GPS) RWY 19

A PAUL VANCE FREDERICKTOWN RGNL (H88)

**NA** Baro-VNAV NA. DME/DME RNP-0.3 NA. Rwy 19 helicopter visibility reduction below 3/4 SM NA. Use Farmington altimeter setting; when not received, use Sparta altimeter setting and increase all DA 111 feet, all MDA 120 feet, LPV all Cats visibility 3/8 mile, LNAV/VNAV all Cats visibility 1/2 mile, LNAV Cat B visibility 1/4 mile and Cat C visibility 1/2 mile and increase Circling all Cats visibility 1/4 mile.

MISSED APPROACH: Climb to 3300 direct GUCFY and hold.

KANSAS CITY CENTER <b>127.475 346.275</b>	UNICOM <b>122.8 (CTAF) 0</b>
--	---------------------------------



CATEGORY	A	B	C	D
LPV DA	1166-1 286 (300-1)			NA
LNAV/VNAV DA	1536-2 1/4 656 (700-2 1/4)			NA
LNAV MDA	1580-1	700 (700-1)	1580-2 700 (700-2)	NA
<b>C</b> CIRCLING	1580-1	700 (700-1)	1640-2 1/4 760 (800-2 1/4)	NA

NC-3, 22 FEB 2024 to 21 MAR 2024

NC-3, 22 FEB 2024 to 21 MAR 2024