

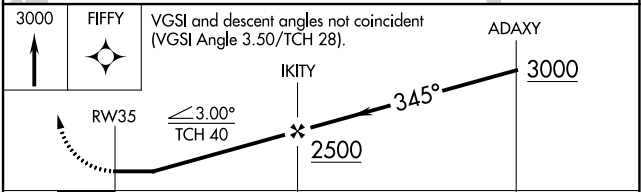
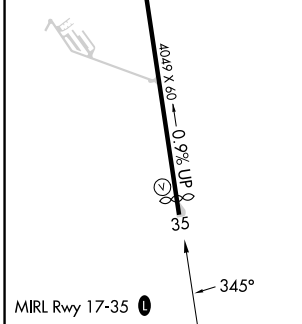
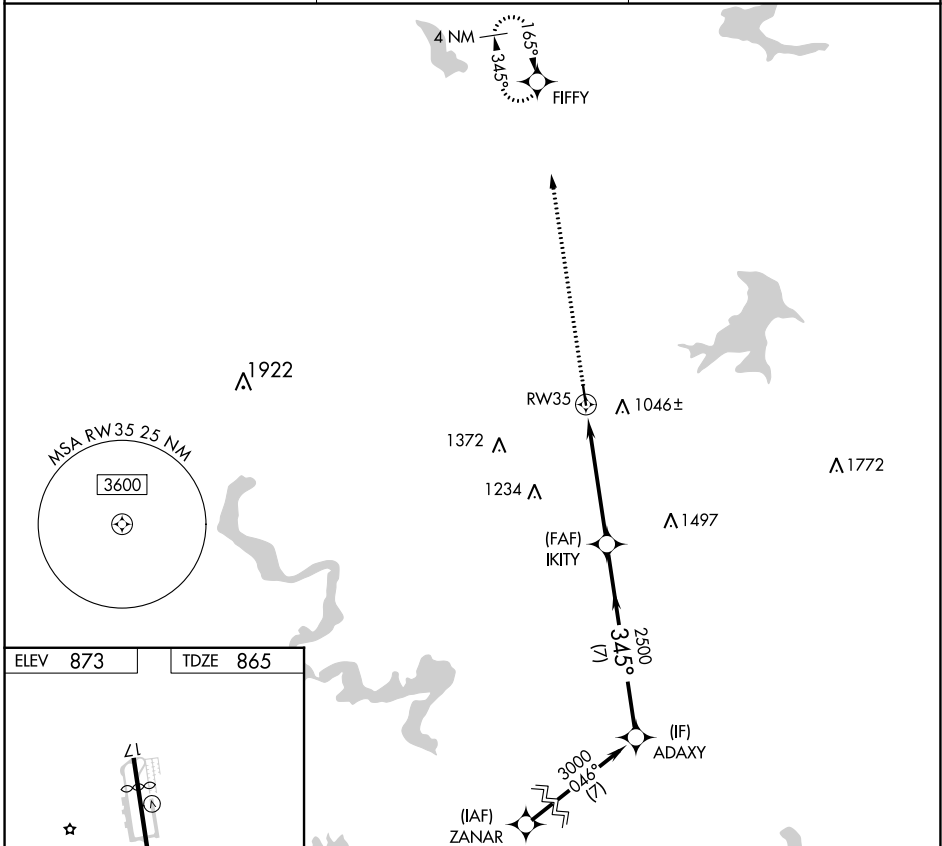
APP CRS 345°	Rwy Idg 3834
	TDZE 865
	Apt Elev 873

RNAV (GPS) RWY 35

BOURLAND FLD (50F)

RNP APCH.	MISSED APPROACH: Climb to 3000 direct FIFFY and hold.
▼ Rwy 35 helicopter visibility reduction below 1 SM NA.	
▲ NA Procedure NA at night.	

CPT AWOS-3 119,525	REGIONAL APP CON 135,975 379.9	UNICOM 123.0 (CTAF)
------------------------------	------------------------------------------	-------------------------------



CATEGORY	A	B	C	D
LNAV MDA	1560-1	695 (700-1)	1560-2 695 (700-2)	NA
CIRCLING	1580-1	707 (800-1)	1680-2¼ 807 (900-2¼)	NA

SC-2, 22 FEB 2024 to 21 MAR 2024

SC-2, 22 FEB 2024 to 21 MAR 2024