

| | | | |
|---|------------------------|-----------------------------|---|
| LOC/DME I-IPJ 111.15 Chan 48 (Y) | APP CRS 233° | Rwy Idg TDZE Apt Elev | 5501 872 878 |
|---|------------------------|-----------------------------|---|

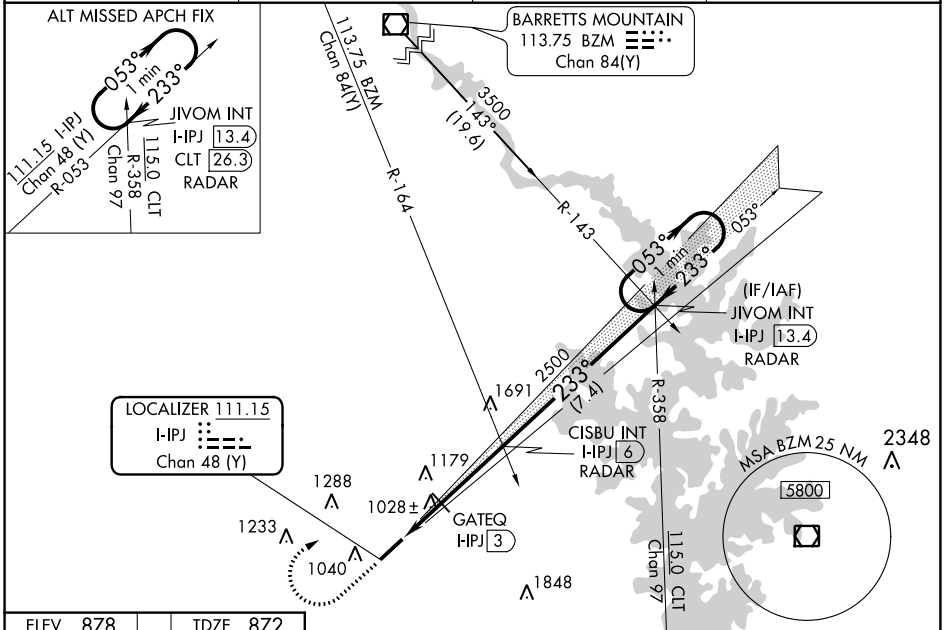
ILS Z or LOC Z RWY 23

LINCOLNTON-LINCOLN COUNTY RGNL (IPJ)

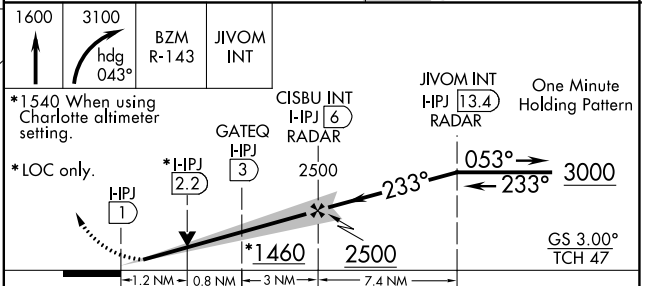
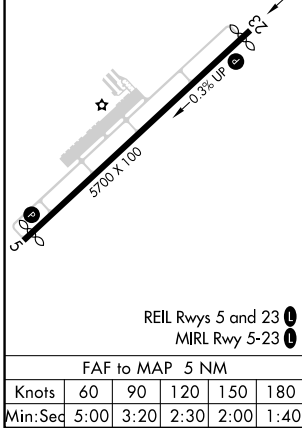
⚠ When local altimeter setting not received, use Charlotte altimeter setting: increase DA to 1212 feet and visibility $\frac{1}{8}$ SM; increase all MDA's 80 feet and visibility S-LOC 23 Cats C/D $\frac{1}{8}$ SM and Circling Cats C/D $\frac{1}{4}$ SM and GATEQ Fix Minimums Cats C/D $\frac{1}{4}$ SM. VDP NA when using Charlotte altimeter setting. Rwy 23 helicopter visibility reduction below $\frac{3}{4}$ SM NA.

MISSED APPROACH: Climb to 1600 then climbing right turn to 3100 on heading 043° and BZM VOR/DME R-143 to JIVOM INT/I-IPJ 13.4 DME/RADAR and hold.

| | | | |
|--------------------------|--|--------------------------------|----------------------------------|
| AWOS-3 119.675 | CHARLOTTE APP CON 134.75 257.2 | CLNC DEL (GCO) 124.9 | UNICOM 123.05 (CTAF) 0 |
|--------------------------|--|--------------------------------|----------------------------------|



| | |
|----------|----------|
| ELEV 878 | TDZE 872 |
|----------|----------|



| CATEGORY | A | B | C | D |
|---------------------------|---|---|---|---|
| S-ILS 23 | 1149- $\frac{7}{8}$ 277 (300- $\frac{7}{8}$) | | | |
| S-LOC 23 | 1460-1 588 (600-1) | 1460-1 $\frac{3}{4}$ 588 (600-1 $\frac{3}{4}$) | 1640-2 $\frac{1}{4}$ 762 (800-2 $\frac{1}{4}$) | 1640-2 $\frac{1}{2}$ 762 (800-2 $\frac{1}{2}$) |
| C CIRCLING | 1460-1 582 (600-1) | 1640-2 $\frac{1}{4}$ 762 (800-2 $\frac{1}{4}$) | 1640-2 $\frac{1}{2}$ 762 (800-2 $\frac{1}{2}$) | |
| GATEQ FIX MINIMUMS | | | | |
| S-LOC 23 | 1280-1 408 (500-1) | 1280-1 $\frac{1}{8}$ 408 (500-1 $\frac{1}{8}$) | | |
| C CIRCLING | 1400-1 522 (600-1) | 1440-1 562 (600-1) | 1640-2 $\frac{1}{4}$ 762 (800-2 $\frac{1}{4}$) | 1640-2 $\frac{1}{2}$ 762 (800-2 $\frac{1}{2}$) |

SE-2, 22 FEB 2024 to 21 MAR 2024

SE-2, 22 FEB 2024 to 21 MAR 2024