

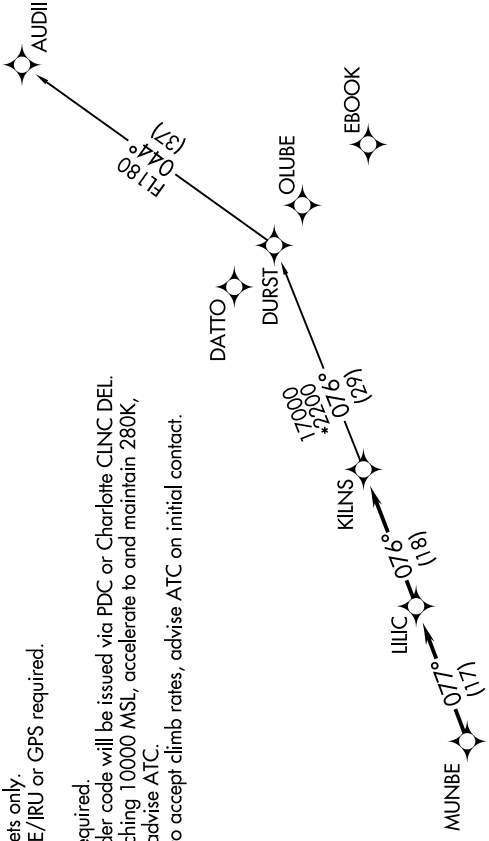
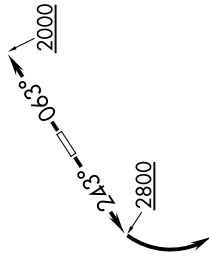
# KILNS FOUR DEPARTURE (RNAV)

SE-2, 22 FEB 2024 to 21 MAR 2024

AWOS-3  
119.675  
CLNC DEL (GCO)  
124.9  
UNICOM (CTAF)  
123.05  
CHARLOTTE DEP CON  
134.75 257.2

- NOTE: For turbojets only.
- NOTE: DME/DME/IRU or GPS required.
- NOTE: RNAV 1.
- NOTE: RADAR required.
- NOTE: Transponder code will be issued via PDC or Charlotte CLNC DEL.
- NOTE: Upon reaching 10000 MSL, accelerate to and maintain 280K, if unable advise ATC.
- NOTE: If unable to accept climb rates, advise ATC on initial contact.

**TOP ALTITUDE:  
3000**



**TAKEOFF MINIMUMS**  
Rwys 5, 23: Standard.

## DEPARTURE ROUTE DESCRIPTION

- TAKEOFF RWY 5:** Climb heading 063° to 2000 before proceeding on course.
- TAKEOFF RWY 23:** Climb heading 243° to 2800 before turning left.
- Climb on heading assigned by ATC, expect RADAR vectors to MUNBE, then on depicted route to KILNS, then on AUDII transition. Maintain 3000. Expect clearance to filed altitude within 10 minutes after departure.

NOTE: Chart not to scale.

## AUDII TRANSITION (KILNS4.AUDII)

SE-2, 22 FEB 2024 to 21 MAR 2024