

WAAS CH <b>45922</b> <b>W18A</b>	APP CRS <b>175°</b>	Rwy Idg TDZE Apt Elev	<b>4001</b> <b>532</b> <b>532</b>
--	------------------------	-----------------------------	---

# RNAV (GPS) RWY 18

LOCKHART MUNI (50R)

RNP APCH.

**▽** Baro-VNAV NA. Use San Marcos altimeter setting, when not received,  
**△** NA use Austin-Bergstrom Intl altimeter setting and increase all DA 16 feet,  
 all MDA 20 feet; increase LNAV Cat B visibility ¼ SM.

MISSED APPROACH: Climb to 4000  
 direct EDIVE and on track 095° to  
 SEEDS and hold.

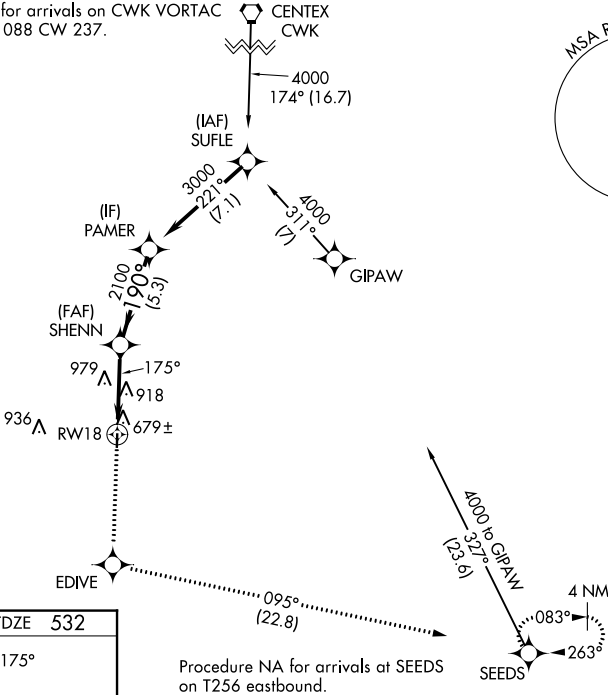
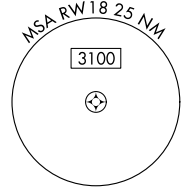
AUSTIN APP CON  
**120.875 270.25**

UNICOM  
**122.8 (CTAF) 0**

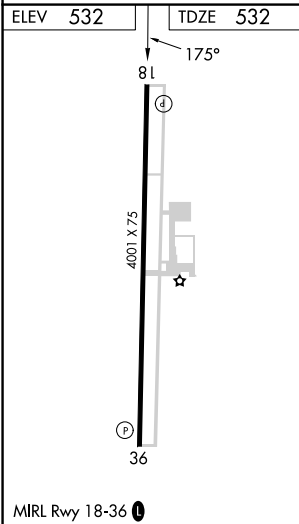
Procedure NA for arrivals on CWK VORTAC  
 airway radials 088 CW 237.

CENTEX  
 CWK

**A**1615



Procedure NA for arrivals at SEEDS  
 on T256 eastbound.



4000	EDIVE	tr 095°	SEEDS	VGSi and RNAV glidepath not coincident (VGSi Angle 3.50/TCH 24).	
↑	✧		✧	SHENN 2100	PAMER 3000
				175°	190°
				2100	2100
				4.8 NM	5.3 NM
GP 3.00° TCH 40					
CATEGORY	A	B	C	D	
LPV DA	815-1 283 (300-1)			NA	
LNAV/VNAV DA	883-1¼ 351 (400-1¼)			NA	
LNAV MDA	1260-1 728 (800-1)		1260-2 728 (800-2)		NA

SC-3, 22 FEB 2024 to 21 MAR 2024

SC-3, 22 FEB 2024 to 21 MAR 2024