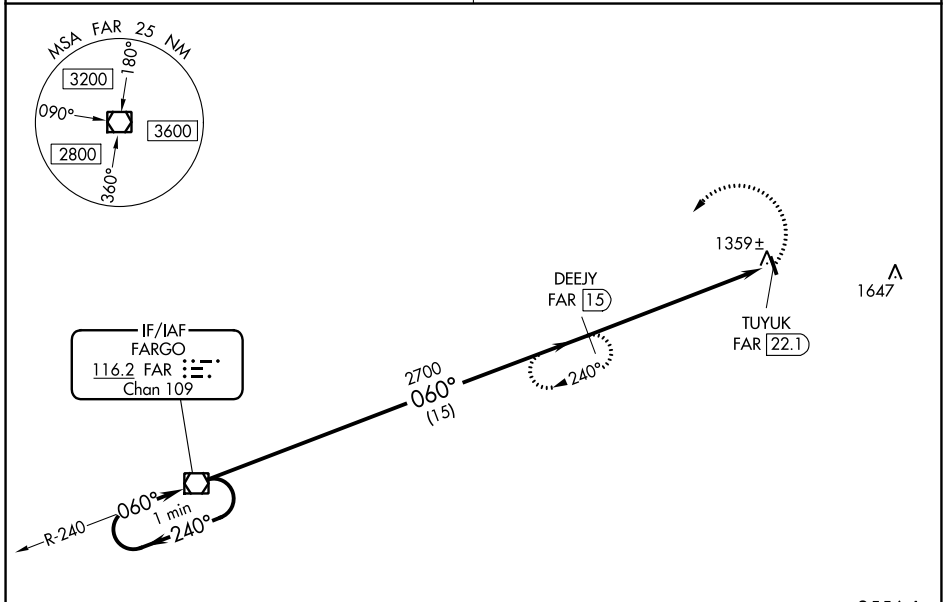


VOR/DME FAR <b>116.2</b> Chan <b>109</b>	APP CRS <b>060°</b>	Rwy Idg TDZE Apt Elev <b>N/A</b> <b>N/A</b> <b>1210</b>
--	------------------------	--

**VOR/DME-A**  
HAWLEY MUNI (04Y)

<p>▼ Use Fargo, ND altimeter setting. ▲ NA</p>	<p>MISSED APPROACH: Climbing left turn to 2700 via FAR VOR/DME R-060 to DEEJY/15 DME and hold.</p>
<p>FARGO APP CON <b>120.4 377.15</b></p>	<p>UNICOM <b>122.8 (CTAF)</b></p>



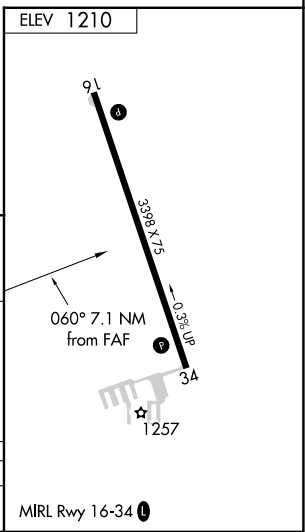
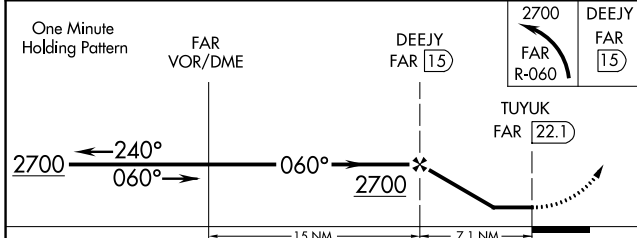
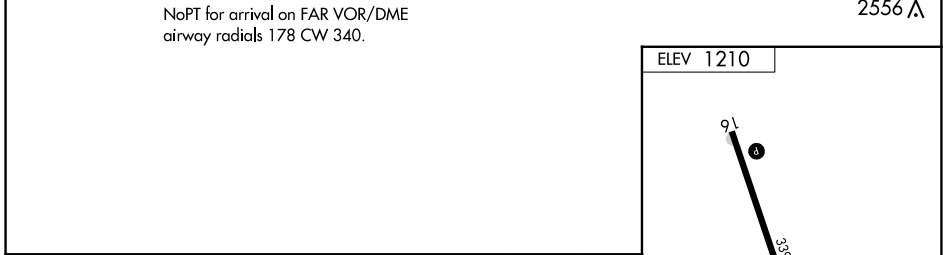
IF/IAF  
FARGO  
116.2 FAR  
Chan 109

NoPT for arrival on FAR VOR/DME  
airway radials 178 CW 340.

2556 ▲

NC-1, 22 FEB 2024 to 21 MAR 2024

NC-1, 22 FEB 2024 to 21 MAR 2024



CATEGORY	A	B	C	D
CIRCLING	1760-1 550 (600-1)	1760-1¼ 550 (600-1¼)	1980-2¼ 770 (800-2¼)	NA