

WESLACO, TEXAS

AL-6930 (FAA)

24025

VOR/DME MFE <b>117.2</b> Chan <b>119</b>	APP CRS <b>080°</b>	Rwy Idg TDZE Apt Elev <b>70</b>	N/A N/A <b>70</b>
--	------------------------	---------------------------------------	-------------------------

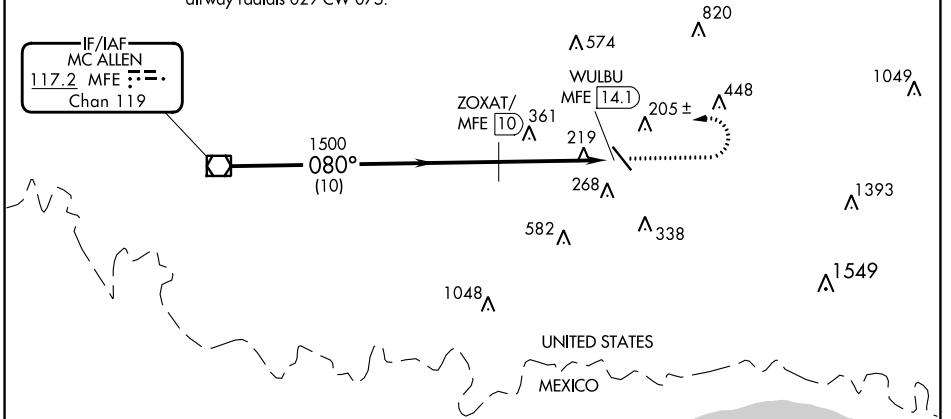
**VOR-A**  
MID VALLEY (TXW)

DME required.		MISSED APPROACH: Climb to 1000 then climbing left turn to 2000 direct MFE VOR/DME.	
▼ When local altimeter not received, use McAllen altimeter setting and increase all MDA 40 feet.			

AWOS-3PT <b>118.575</b>	VALLEY APP CON <b>122.65 377.2</b>	CLNC DEL <b>125.95</b>	UNICOM <b>122.8 (CTAF) 0</b>
----------------------------	---------------------------------------	---------------------------	---------------------------------

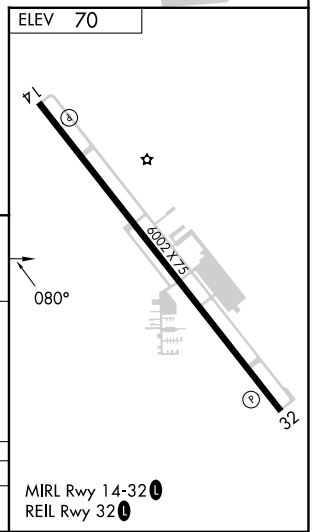
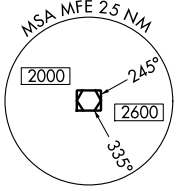
Procedure NA for arrival on MFE VOR/DME airway radials 029 CW 075.

IF/IAF  
MC ALLEN  
**117.2 MFE**   
Chan **119**



SC-3, 22 FEB 2024 to 21 MAR 2024

SC-3, 22 FEB 2024 to 21 MAR 2024



MFE VOR/DME	1000	2000	MFE	
1600	↑	↻		
080°				
10 NM		4.2 NM		
ZOXAT/MFE (10)		WULBU MFE (14.1)		
1500				
CATEGORY	A	B	C	D
CIRCLING	620-1	550 (600-1)	700-1¾ 630 (700-1¾)	NA

MIRL Rwy 14-32 **0**  
REIL Rwy 32 **0**

WESLACO, TEXAS  
Orig-C 25JAN24

26°11'N-97°58'W

MID VALLEY (TXW)  
**VOR-A**