

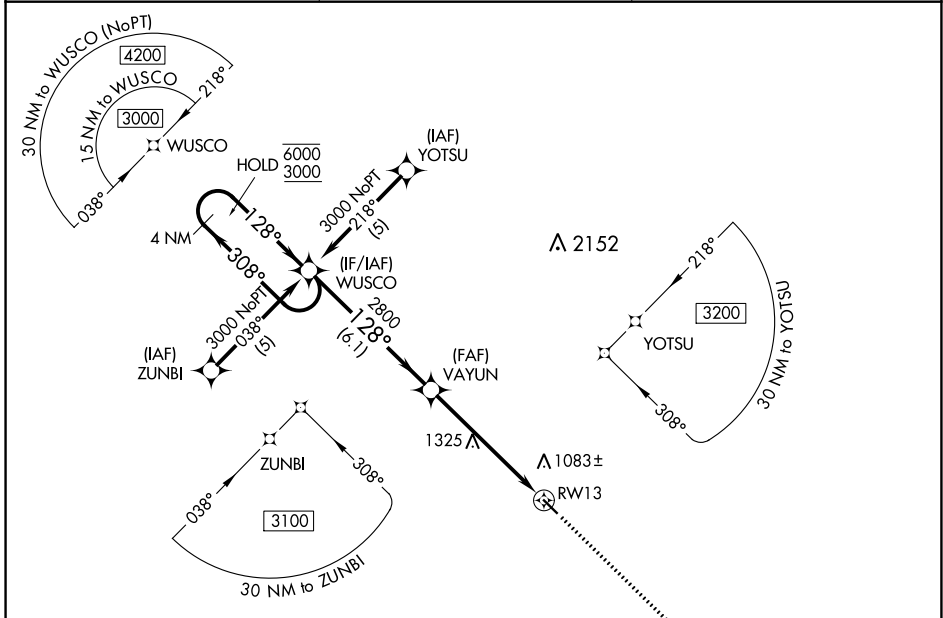
APP CRS	Rwy Idg	3901
128°	TDZE	933
	Apt Elev	933

RNAV (GPS) RWY 13

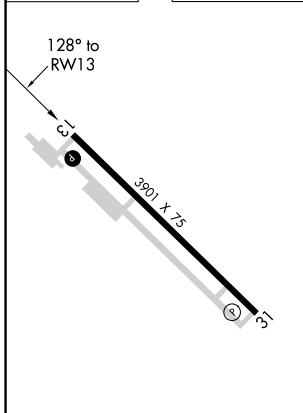
CASSELTON ROBERT MILLER RGNL (5N8)

RNP APCH.	Rwy 13 helicopter visibility reduction below 3/4 SM NA. Use Fargo altimeter setting; when not received use Morehead altimeter setting and increase all MDA 20 feet.	MISSED APPROACH: Climb to 3000 direct JINPU and hold.
FAR ASOS 124.5 379.2		

FAR ASOS 124.5 379.2	FARGO APP CON 120.4 377.15	UNICOM 122.8 (CTAF) 1
--------------------------------	--------------------------------------	---------------------------------



ELEV 933	TDZE 933
----------	----------



4 NM Holding Pattern				VGS and descent angles not coincident (VGS Angle 3.00/TCH 21).				3000	JINPU
6000 ← 308°				→ 128°				↑	
3000				2800				✧	
				6.1 NM				5.7 NM	
CATEGORY	A		B		C		D		
LNAV MDA	1620-1		687 (700-1)		1620-2		687 (700-2)		
							NA		

REIL Rwy 31 1
MIRL Rwy 13-31 1

NC-1, 22 FEB 2024 to 21 MAR 2024

NC-1, 22 FEB 2024 to 21 MAR 2024