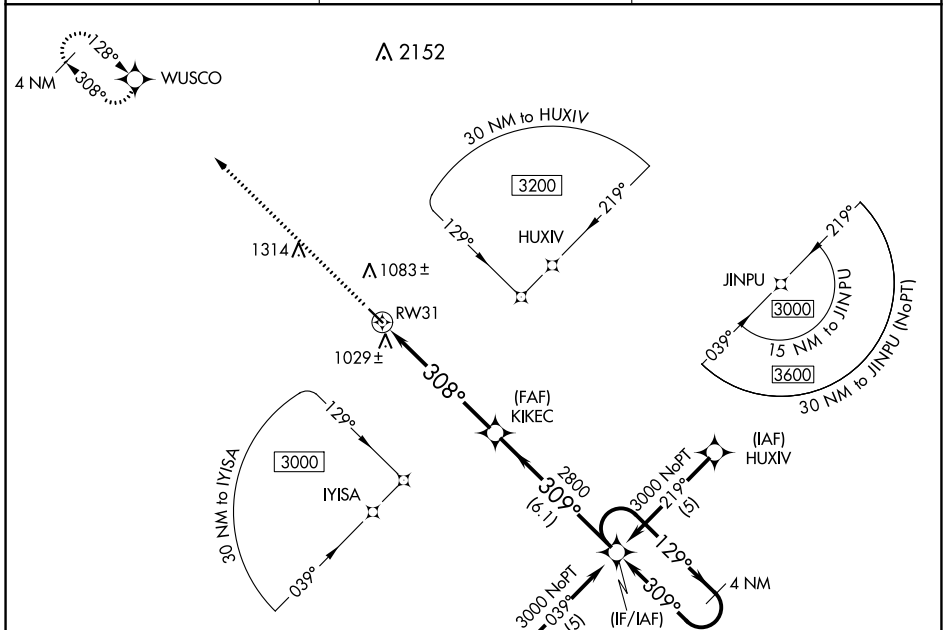


WAAS CH 53607 W31A	APP CRS 308°	Rwy Idg TDZE Apt Elev	3901 933 933
--	------------------------	-----------------------------	---

RNAV (GPS) RWY 31

CASSELTON ROBERT MILLER RGNL (5N8)

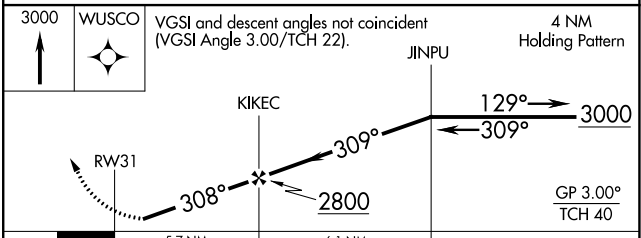
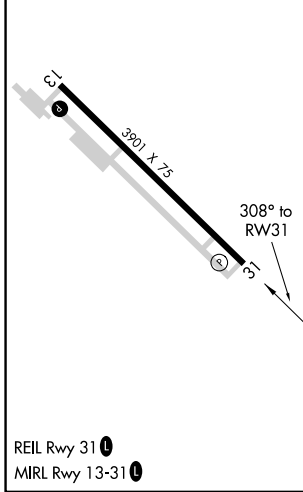
RNP APCH.	Use Fargo altimeter setting; when not received, use Moorhead altimeter setting and increase all MDA 20 feet. Baro-VNAV NA.	MISSED APPROACH: Climb to 3000 direct WUSCO and hold.
FAR ASOS 124.5 379.2	FARGO APP CON 120.4 377.15	UNICOM 122.8 (CTAF) 0



NC-1, 22 FEB 2024 to 21 MAR 2024

NC-1, 22 FEB 2024 to 21 MAR 2024

ELEV 933	TDZE 933
----------	----------



CATEGORY	A	B	C	D
LPV DA	1226-1 293 (300-1)			NA
LNAV/VNAV DA	1370-1½ 437 (500-1½)			NA
LNAV MDA	1420-1	487 (500-1)	1420-1¼ 487 (500-1¼)	NA
CIRCLING	1480-1 547 (600-1)	1520-1 587 (600-1)	1620-2 687 (700-2)	NA