

VOR/DME FAR <b>116.2</b> Chan <b>109</b>	APP CRS <b>283°</b>	Rwy Idg TDZE Apt Elev <b>3901</b> <b>933</b> <b>933</b>
--	------------------------	--

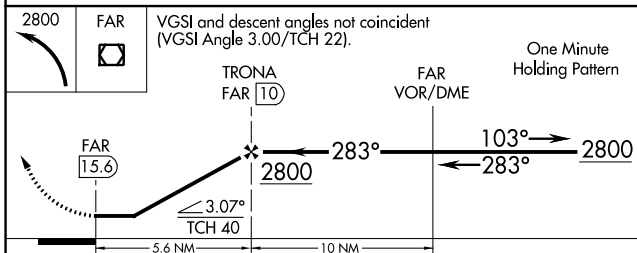
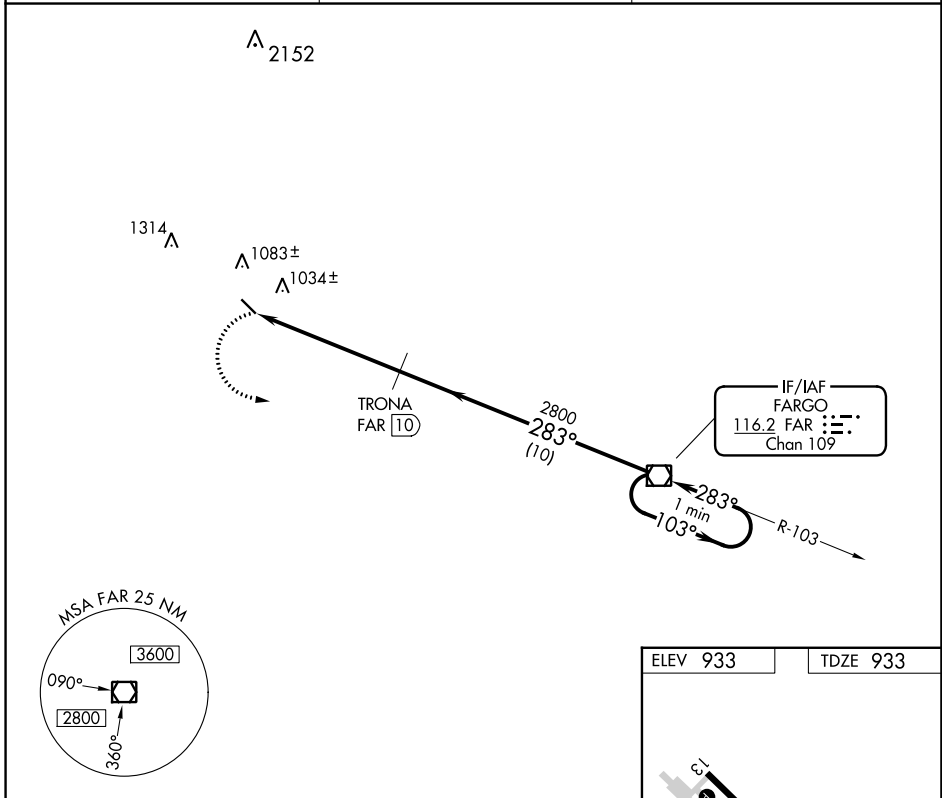
# VOR/DME RWY 31

CASSELTON ROBERT MILLER RGNL (5N8)

**▼** Use Fargo altimeter setting; when not received, use Moorhead altimeter setting and increase all MDA 20 feet.  
**▲ NA**

**MISSED APPROACH:** Climbing left turn to 2800 direct FAR VOR/DME and hold.

FAR ASOS <b>124.5 379.2</b>	FARGO APP CON <b>120.4 377.15</b>	UNICOM <b>122.8 (CTAF) 0</b>
--------------------------------	--------------------------------------	---------------------------------



ELEV 933	TDZE 933
----------	----------

Diagram of RWY 31 showing dimensions and distance from FAF:  
 - RWY 31  
 - 3901 x 75  
 - 283° 5.6 NM from FAF

REIL Rwy 31 0  
 MIRL Rwy 13-31 0

CATEGORY	A	B	C	D
S-31	1360-1	427 (500-1)	1360-1¼ 427 (500-1¼)	NA
CIRCLING	1480-1 547 (600-1)	1520-1 587 (600-1)	1620-2 687 (700-2)	NA

NC-1, 22 FEB 2024 to 21 MAR 2024

NC-1, 22 FEB 2024 to 21 MAR 2024