

HUGO, OKLAHOMA

AL-6979 (FAA)

19115

WAAS CH 86639 W35A	APP CRS 358°	Rwy Idg TDZE Apt Elev	4007 572 572
--	------------------------	-----------------------------	---

RNAV (GPS) RWY 35

STAN STAMPER MUNI (HHW)

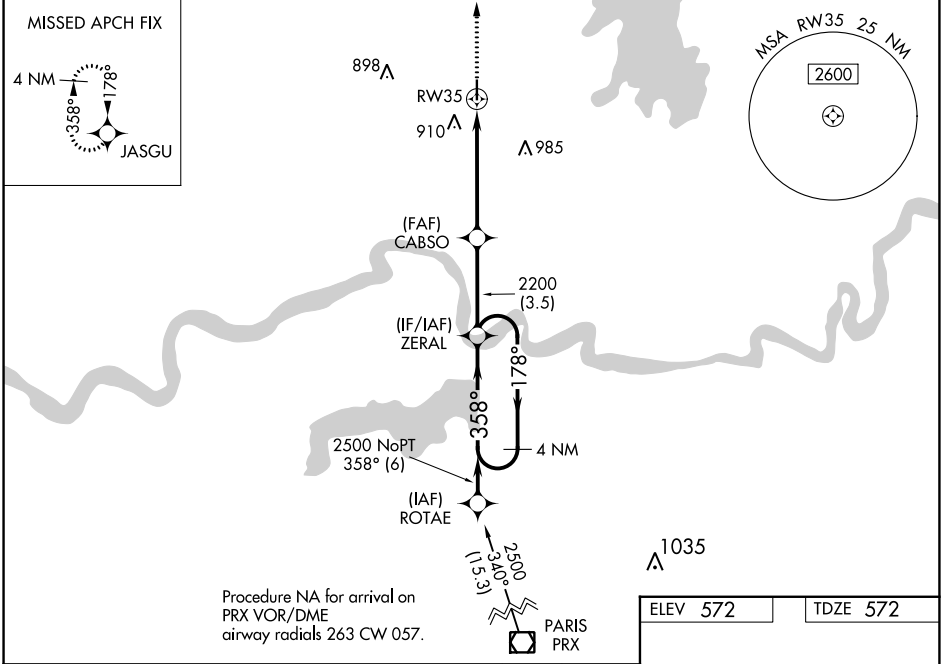
For uncompensated Baro-VNAV systems, LNAV/VNAV NA below -16°C (4°F) or above 54°C (130°F). Rwy 35 helicopter visibility reduction below 1 SM NA. DME/DME RNP-0.3 NA. Straight-in Rwy 35 and Circling Rwy 35 NA at night.

MISSED APPROACH: Climb to 4000 direct JASGU and hold, continue climb-in-hold to 4000.

AWOS-3
119.025

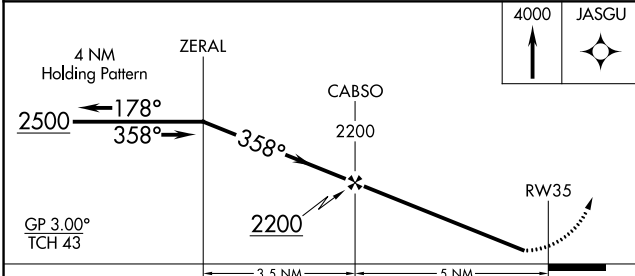
FORT WORTH CENTER
127.6 307.2

UNICOM
122.8 (CTAF) 0

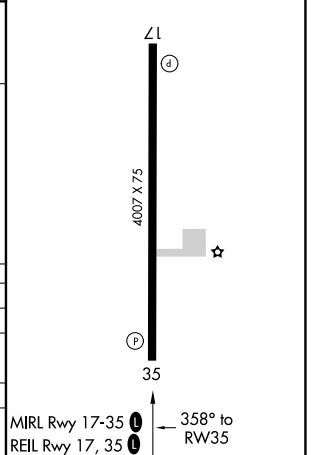


Procedure NA for arrival on PRX VOR/DME airway radials 263 CW 057.

ELEV 572 TDZE 572



CATEGORY	A	B	C	D
LPV DA		822-1	250 (300-1)	
LNAV/VNAV DA		1071-1 $\frac{3}{8}$	499 (500-1 $\frac{3}{8}$)	
LNAV MDA	1020-1	448 (500-1)	1020-1 $\frac{3}{8}$	448 (500-1 $\frac{3}{8}$)
C CIRCLING	1220-1	648 (700-1)	1340-2 $\frac{1}{4}$ 768 (800-2 $\frac{1}{4}$)	1340-2 $\frac{1}{2}$ 768 (800-2 $\frac{1}{2}$)



HUGO, OKLAHOMA
Amdt 1 29MAR18

34°02'N-95°33'W

STAN STAMPER MUNI (HHW) RNAV (GPS) RWY 35

SC-1, 22 FEB 2024 to 21 MAR 2024

SC-1, 22 FEB 2024 to 21 MAR 2024