

VOR/DME CPN <b>116.05</b>	APP CRS <b>307°</b>	Rwy Idg TDZE Apt Elev <b>N/A</b> <b>N/A</b> <b>5030</b>
Chan <b>107(Y)</b>		

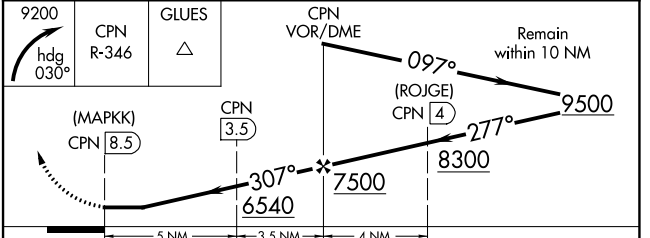
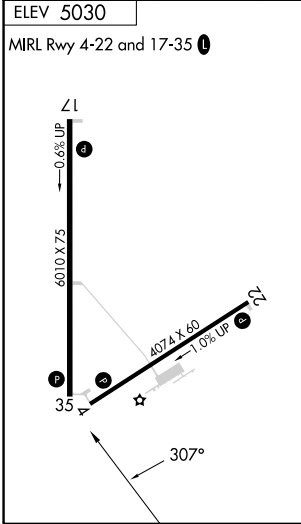
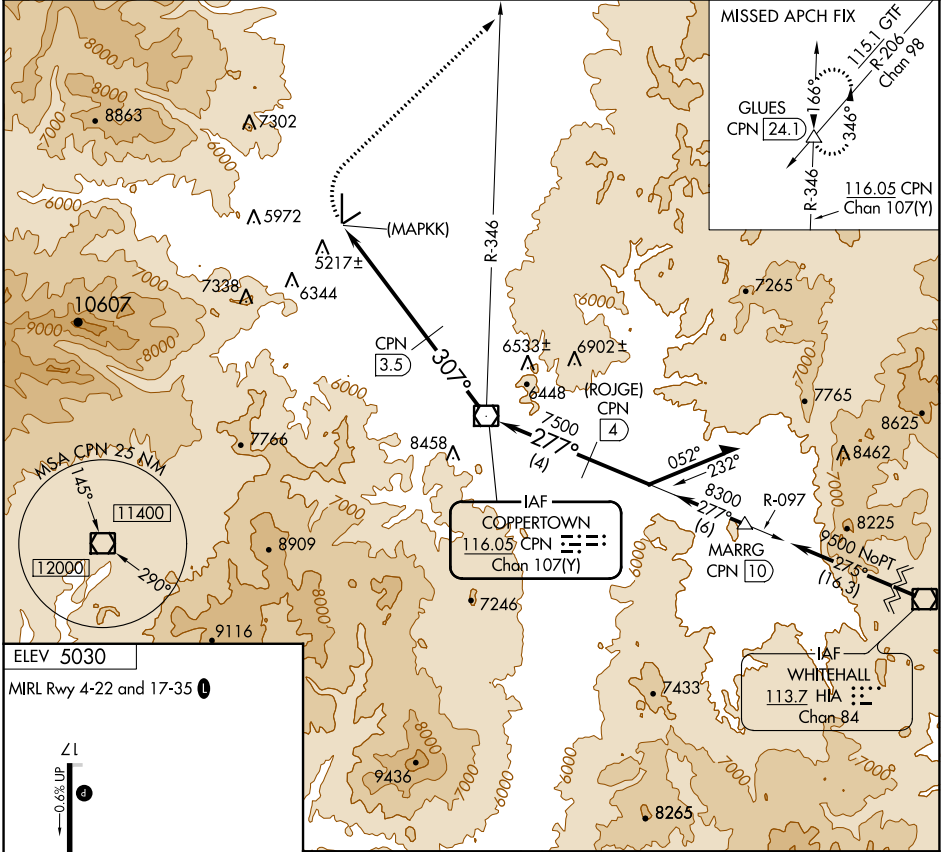
# VOR/DME or GPS-A

BOWMAN FLD (3U3)

Use Butte (BTM) altimeter setting; when not received, procedure NA. Circling NA for Cats C and D west of Rwy 17-35.

MISSED APPROACH: Climbing right turn to 9200 via heading 030° to intercept CPN R-346 to GLUES and hold.

AWOS-AV <b>122.8</b>	SALT LAKE CENTER <b>132.4 338.3</b>	UNICOM <b>122.8 (CTAF)</b>
-------------------------	--	-------------------------------



CATEGORY	A	B	C	D
CIRCLING	6140-1¼ 1110 (1200-1¼)	6300-1½ 1270 (1300-1½)	6300-3 1270 (1300-3)	6540-3 1510 (1600-3)

NW-1, 22 FEB 2024 to 21 MAR 2024

NW-1, 22 FEB 2024 to 21 MAR 2024