

WAAS CH <b>53619</b> <b>W28A</b>	APP CRS <b>284°</b>	Rwy Idg TDZE Apt Elev	<b>4000</b> <b>881</b> <b>881</b>
--	------------------------	-----------------------------	---

# RNAV (GPS) RWY 28

FULTON COUNTY (NY)

RNP APCH - GPS.

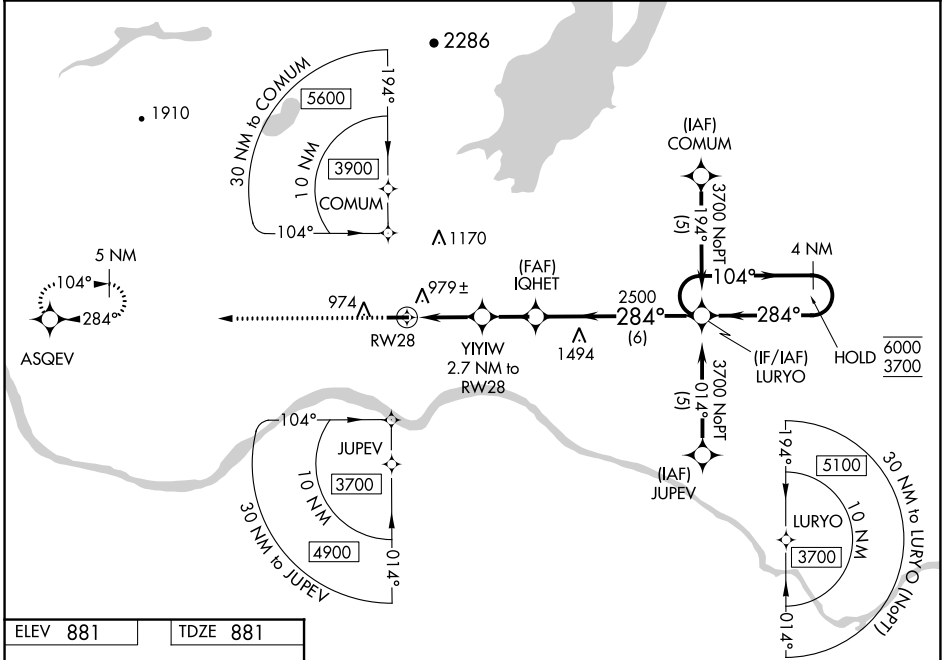
**▼** Rwy 28 helicopter visibility reduction below 3/4 SM NA. For uncompensated Baro-VNAV systems, LNAV/VNAV NA below -16°C or above 54°C.

**MISSED APPROACH:** Climb to 5000 direct ASQEV and hold, continue climb-in-hold to 5000.

AWOS-3  
**119.225**

ALBANY APP CON  
**118.05**

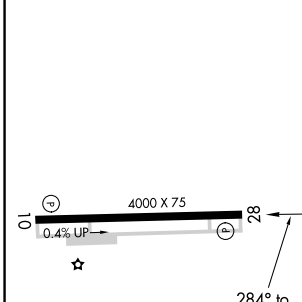
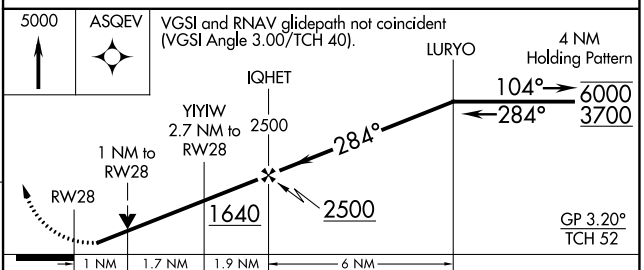
UNICOM  
**122.7 (CTAF) ①**



NE-2, 22 FEB 2024 to 21 MAR 2024

NE-2, 22 FEB 2024 to 21 MAR 2024

ELEV 881	TDZE 881
----------	----------



CATEGORY	A	B	C	D
LPV DA	1131-3/4	250 (300-3/4)		NA
LNAV/VNAV DA	1141-3/4	260 (300-3/4)		NA
LNAV MDA	1240-1	359 (400-1)		NA
<b>C</b> CIRCLING	1280-1 399 (400-1)	1340-1 459 (500-1)		NA

MIRL Rwy 10-28 ①  
REIL Rwy 10 and 28 ①