

WAAS CH 93924 W36A	APP CRS 005°	Rwy Idg 3499 TDZE 246 Apt Elev 247
--	------------------------	---

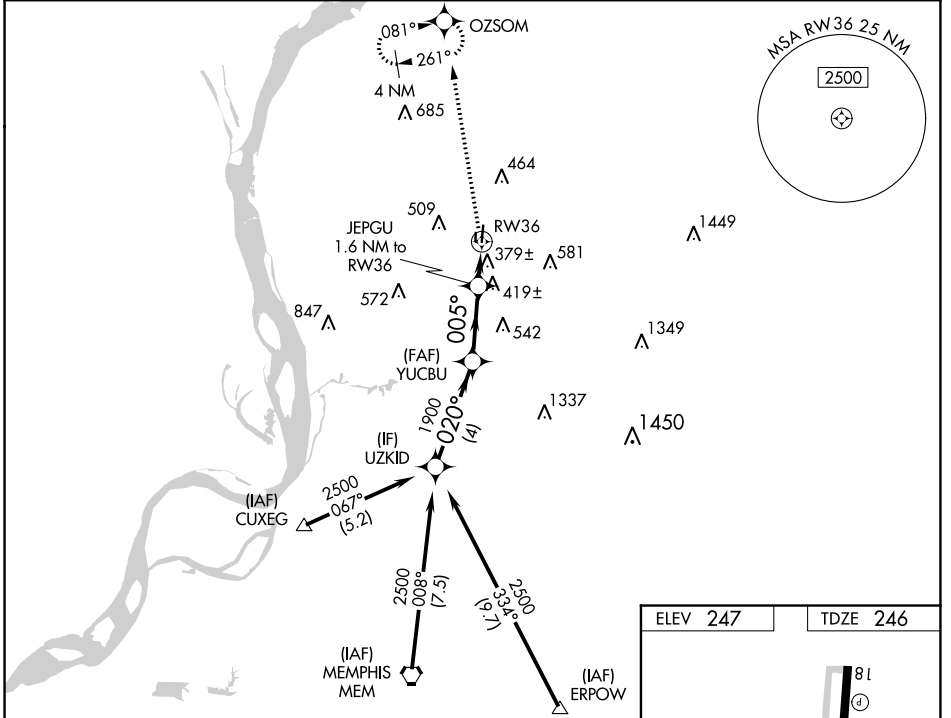
RNAV (GPS) RWY 36

CHARLES W BAKER (2M8)

⚠ NA For uncompensated Baro-VNAV systems, LNAV/VNAV NA below -15°C (5°F) or above 42°C (107°F). DME/DME RNP-0.3 NA. When local altimeter setting not received, use Millington/Memphis altimeter setting and increase LPV DA to 610 feet; increase LNAV/VNAV DA to 713 feet; increase all MDAs 40 feet and LNAV Cat C visibility 1/8 SM and Circling Cat C visibility 1/4 SM. Rwy 36 helicopter visibility reduction below 3/4 SM NA. Baro-VNAV and VDP NA when using Millington/Memphis altimeter setting. Circling Rwy 18 NA at night.

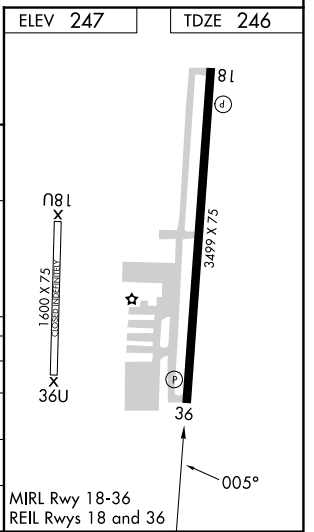
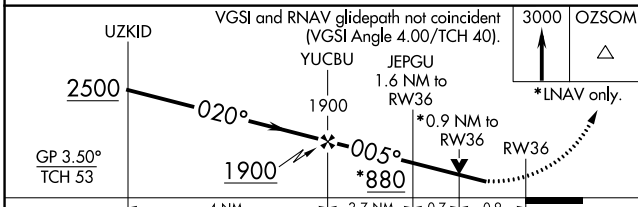
MISSED APPROACH: Climb to 3000 direct OZSOM and hold, continue climb-in-hold to 3000.

AWOS-3PT 119.575	MEMPHIS APP CON 125.8 338.3	UNICOM 122.8 (CTAF)
----------------------------	---------------------------------------	-------------------------------



SE-1, 22 FEB 2024 to 21 MAR 2024

SE-1, 22 FEB 2024 to 21 MAR 2024



CATEGORY	A		B		C		D
	LPV	DA	LPV	DA	LPV	DA	DA
LPV DA	586-1		340 (400-1)				NA
LNAV/VNAV DA	689-1 ³ / ₈		443 (500-1 ³ / ₈)				NA
LNAV MDA	680-1		434 (500-1)		680-1 ¹ / ₄ 434 (500-1 ¹ / ₄)		NA
CIRCLING	760-1 513 (600-1)		860-1 613 (700-1)		900-1 ³ / ₄ 653 (700-1 ³ / ₄)		NA