

APP CRS	Rwy Idg	2289
059°	TDZE	118
	Apt Elev	118

RNAV (GPS) RWY 6

POTOMAC AIRFIELD (VKX)

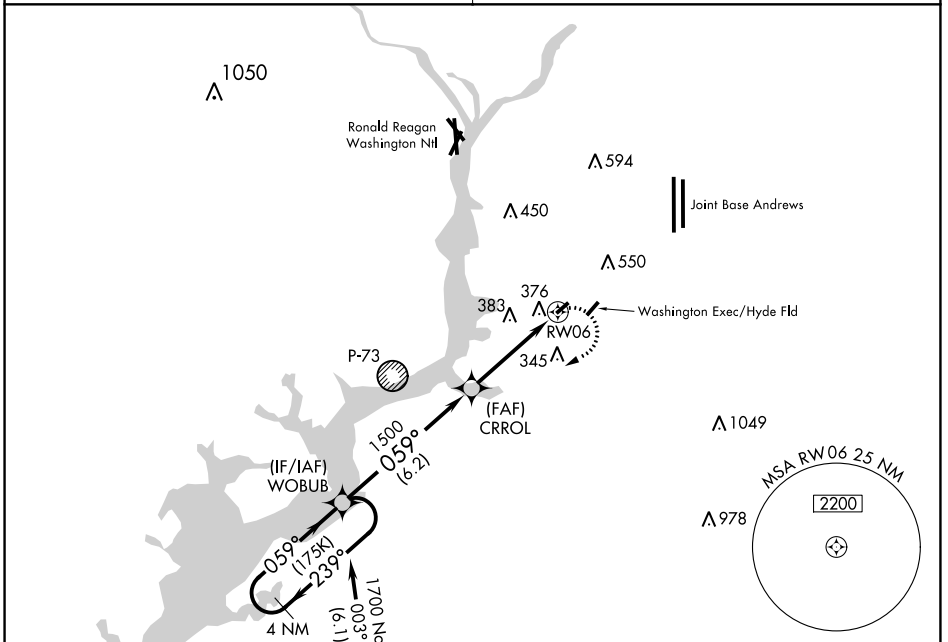
▽ Circling NA SE of Rwy 6-24. DME/DME RNP-0.3 NA. If local altimeter setting not received, use Joint Base Andrews altimeter setting and increase all MDAs 40 feet. Rwy 6 helicopter visibility reduction below 1 SM NA.

△ NA

MISSED APPROACH: Climbing right turn to 1700 direct WOBUB and hold.

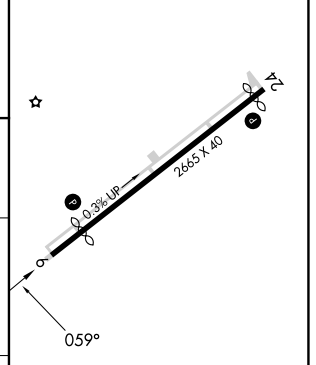
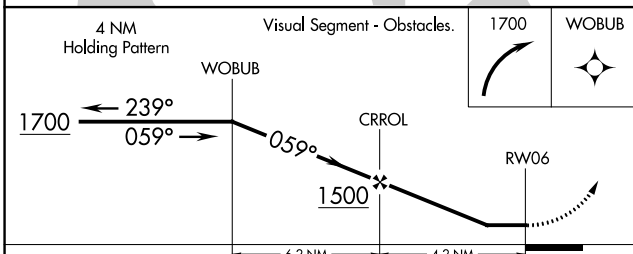
POTOMAC APP CON
124.7 338.2

UNICOM
122.8 (CTAF) 0



Procedure NA for arrivals at IRONS on V376 southbound.

ELEV 118	TDZE 118
----------	----------



CATEGORY	A	B	C	D
LNVA MDA	680-1 562 (600-1)		NA	
CIRCLING	740-1 622 (700-1)		NA	

MIRL Rwy 6-24 0
REIL Rwy 6 and 24

NE-3, 22 FEB 2024 to 21 MAR 2024

NE-3, 22 FEB 2024 to 21 MAR 2024