

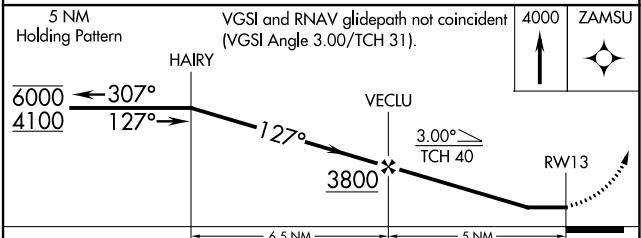
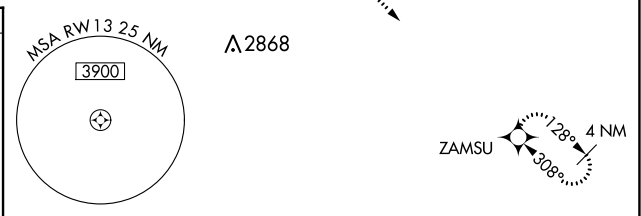
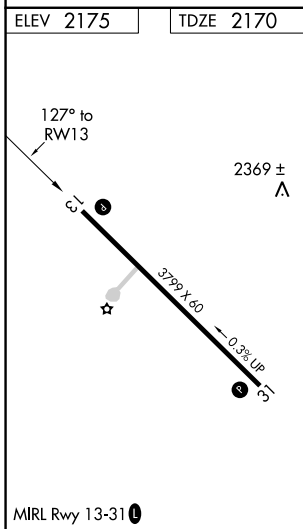
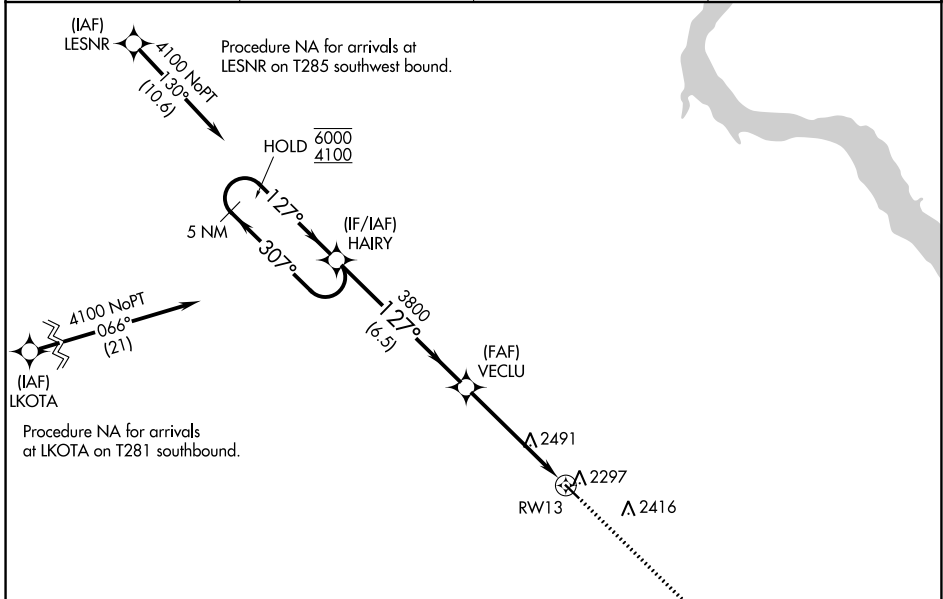
APP CRS	Rwy Idg	<b>3799</b>
<b>127°</b>	TDZE	<b>2170</b>
	Apt Elev	<b>2175</b>

# RNAV (GPS) RWY 13

GREGORY MUNI-FLYNN FLD (9D1)

RNP APCH.	<p><b>▽</b> Rwy 13 helicopter visibility reduction below ¼ SM NA. Use Winner altimeter setting; when not received, use Ainsworth altimeter setting and increase all MDA 100 feet; increase LNAV Cat B visibility ¼ SM and Cat C visibility ½ SM.</p>	<p>MISSED APPROACH: Climb to 4000 direct ZAMSU and hold.</p>
-----------	--	--

ICR ASOS <b>126.775</b>	MINNEAPOLIS CENTER <b>125.1 269.1</b>	GCO <b>121.725</b>	AUNICOM <b>122.8 (CTAF) 0</b>
----------------------------	--	-----------------------	----------------------------------



CATEGORY	A	B	C	D
LNAV MDA	2820-1	650 (700-1)	2820-1 7/8 650 (700-1 7/8)	NA

NC-1, 22 FEB 2024 to 21 MAR 2024

NC-1, 22 FEB 2024 to 21 MAR 2024