

APP CRS	Rwy Idg	<b>3401</b>
<b>006°</b>	TDZE	<b>1690</b>
	Apt Elev	<b>1694</b>

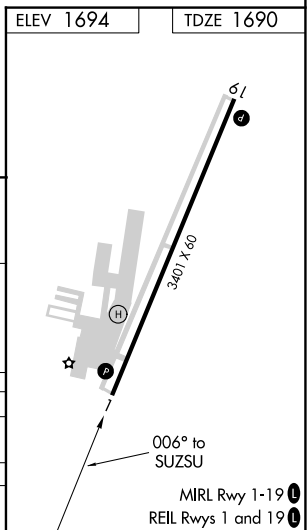
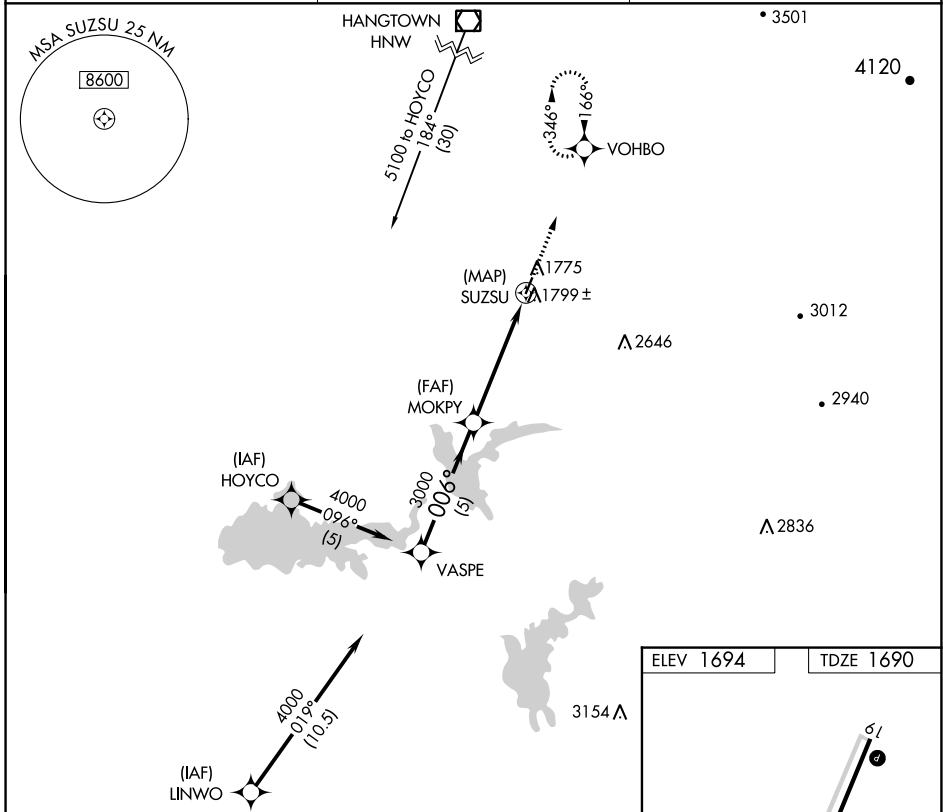
# GPS RWY 1

WESTOVER FLD AMADOR COUNTY (JAQ)

**NA** When local altimeter setting not received, use Sacramento Exec altimeter setting.

**MISSED APPROACH:** Climb to 4500 on 006° course to VOHBO and hold.

AWOS-3 <b>121.125</b>	NORCAL APP CON <b>125.1 363.2</b>	UNICOM <b>123.075 (CTAF)</b> <b>0</b>
--------------------------	--------------------------------------	--



Procedure Turn NA	VASPE	MOKPY	SUZSU	VOHBO
	4000	3000	4500	006° crs
	5 NM		5 NM	
CATEGORY	A	B	C	D
S-1	2060-1	370 (400-1)	NA	NA
SACRAMENTO EXEC ALTIMETER SETTING MINIMUMS				
S-1	2380-1	690 (700-1)	NA	NA

SW-2, 22 FEB 2024 to 21 MAR 2024

SW-2, 22 FEB 2024 to 21 MAR 2024