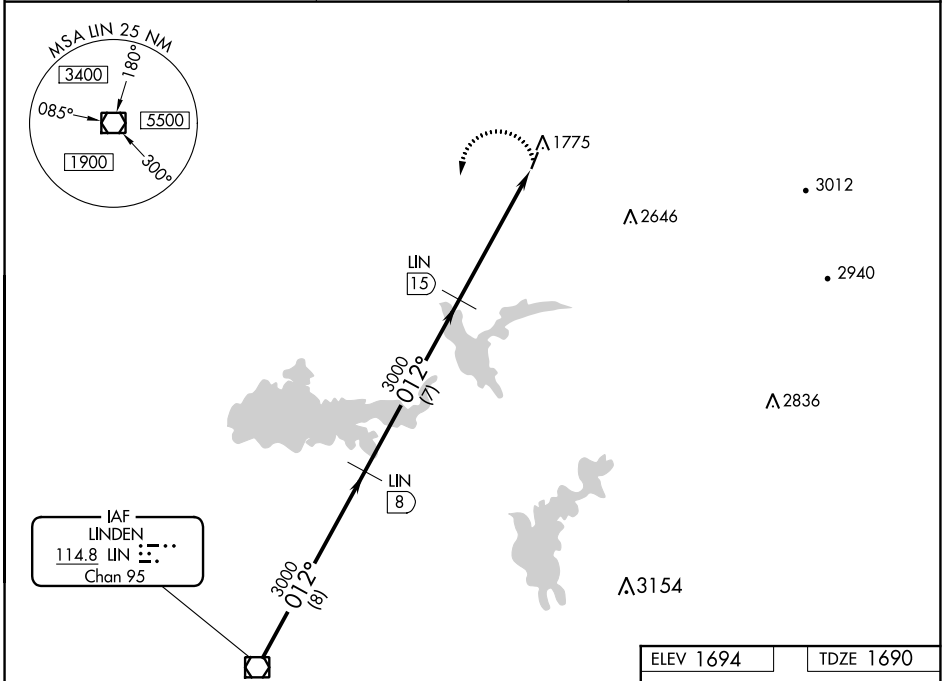


VOR/DME LIN 114.8 Chan 95	APP CRS 012°	Rwy Idg 3401 TDZE 1690 Apt Elev 1694
---	------------------------	---

VOR/DME RWY 1
WESTOVER FLD AMADOR COUNTY (JAQ)

NA If local altimeter not received, use Sacramento Exec altimeter setting. Circling Rwy 19 NA at night. MISSED APPROACH: Climbing left turn to 3000 via LIN R-012 to LIN VOR/DME.

AWOS-3 121.125	NORCAL APP CON 125.1 363.2	UNICOM 123.075 (CTAF) 0
--------------------------	--------------------------------------	-----------------------------------



SW-2, 22 FEB 2024 to 21 MAR 2024

SW-2, 22 FEB 2024 to 21 MAR 2024

	LIN VOR/DME		LIN 8		LIN 15		LIN 20.4	
	3000		3000		3000		3000	
Procedure Turn NA	8 NM		7 NM		5.4 NM			
CATEGORY	A		B		C		D	
S-1	2080-1 390 (400-1)		2080-1¼ 390 (400-1¼)		NA		NA	
CIRCLING	2200-1 506 (600-1)		2200-1¼ 506 (600-1¼)		NA		NA	
SACRAMENTO EXEC ALTIMETER SETTING MINIMUMS								
S-1	2380-1 690 (700-1)		2380-1¼ 690 (700-1¼)		NA		NA	
CIRCLING	2520-1 826 (900-1)		2520-1¼ 826 (900-1¼)		NA		NA	

