

| | | |
|--------------------------|------------------------|---|
| LOC I-TV 109.7 | APP CRS 357° | Rwy Idg 5002 TDZE 86 Apt Elev 86 |
|--------------------------|------------------------|---|

ILS or LOC RWY 36

VICKSBURG TALLULAH RGNL (TVR)

RNP APCH - GPS required for procedure entry at BARNE.

ADF required.

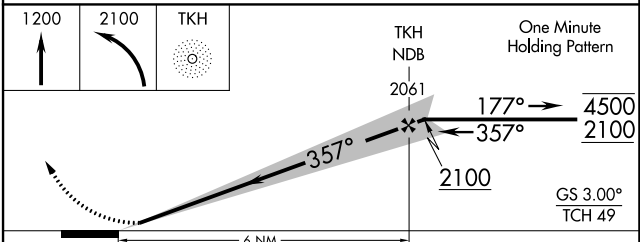
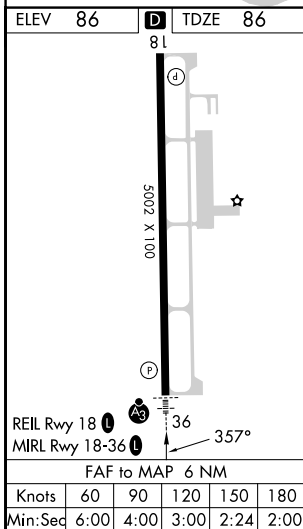
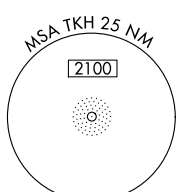
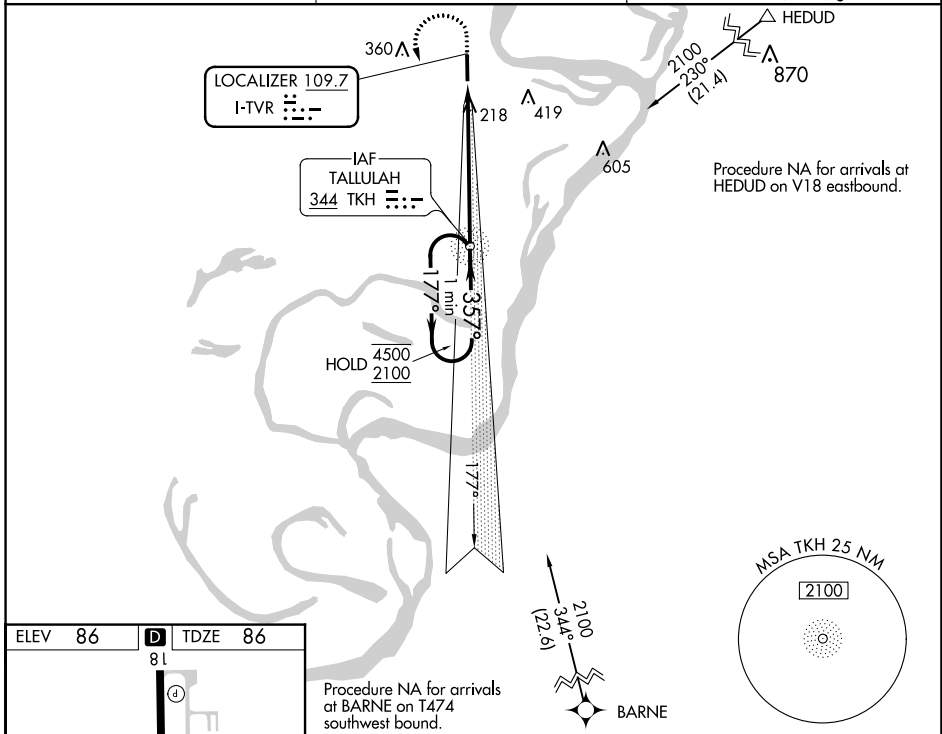
⚠ For inop ALS when using Vicksburg Muni, MS altimeter setting, increase S-LOC Cats C and D visibility to 1 3/8 SM. When local altimeter setting not received, use Vicksburg Muni, MS altimeter setting: increase S-ILS 36 DA to 309 feet; increase all MDAs 40 feet and visibility S-LOC 36 Cats C/D 1/8 SM and Circling Cats C/D 1/4 SM.

SSALR



MISSED APPROACH: Climb to 1200 then climbing left turn to 2100 direct TKH NDB and hold.

| | | |
|------------------------|--------------------------------------|-------------------------------|
| ASOS 118.525 | MEMPHIS CENTER 132.5 259.1 | UNICOM 123.0 (CTAF) |
|------------------------|--------------------------------------|-------------------------------|



| CATEGORY | A | B | C | D |
|----------|---------|---------------|------------------------------|----------------------|
| S-ILS 36 | 286-1/2 | | 200 (200-1/2) | |
| S-LOC 36 | 540-1/2 | 454 (500-1/2) | 540-7/8 | 454 (500-7/8) |
| CIRCLING | 540-1 | 454 (500-1) | 720-1 3/4 634 (700-1 3/4) | 720-2 634 (700-2) |

SC-4, 22 FEB 2024 to 21 MAR 2024

SC-4, 22 FEB 2024 to 21 MAR 2024