

TALLULAH, LOUISIANA

AL-9196 (FAA)

22363

| | | |
|--|------------------------|---|
| WAAS Chan 99700 W36A | APP CRS 357° | Rwy ldg 5002 TDZE 86 Apr Elev 86 |
|--|------------------------|---|

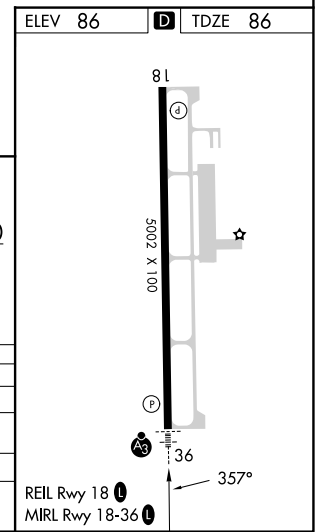
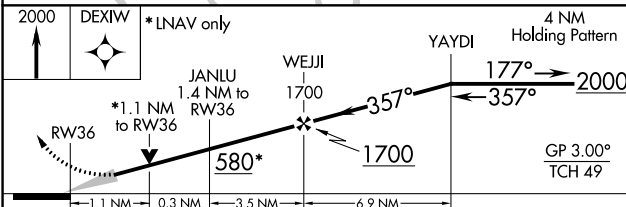
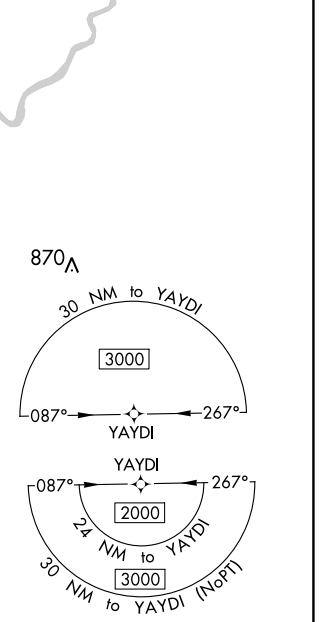
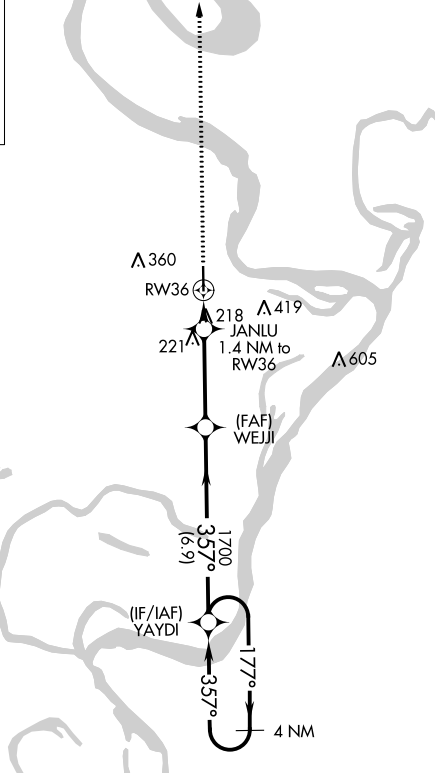
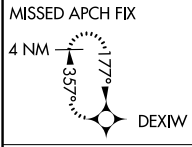
RNAV (GPS) RWY 36

VICKSBURG TALLULAH RGNL (TVR)

⚠ For uncompensated Baro-VNAV systems, LNAV/VNAV NA below -8°C (18°F) or above 54°C (130°F). DME/DME RNP-0.3 NA. When local altimeter setting not received, use Vicksburg Muni, MS altimeter setting and increase LPV DA to 309 feet, LNAV/VNAV DA to 516 feet all visibilities 1/8 mile; increase all MDA 40 feet and visibility Cats C/D 1/4 mile. Baro-VNAV and VDP NA with Vicksburg Muni, MS altimeter setting.

| | |
|-----------|--|
| SSALR | MISSED APPROACH: Climb to 2000 direct DEXIW and hold. |
|-----------|--|

| | | |
|------------------------|--------------------------------------|-------------------------------|
| ASOS 118.525 | MEMPHIS CENTER 132.5 259.1 | UNICOM 123.0 (CTAF) |
|------------------------|--------------------------------------|-------------------------------|



| CATEGORY | A | B | C | D |
|-------------------|---------|---------------|------------------------------|----------------------|
| LPV DA | | 286-1/2 | 200 (200-1/2) | |
| LNAV/VNAV DA | | 493-7/8 | 407 (500-7/8) | |
| LNAV MDA | 480-1/2 | 394 (400-1/2) | 480-5/8 | 394 (400-3/8) |
| C CIRCLING | 540-1 | 454 (500-1) | 720-1 3/4 634 (700-1 3/4) | 720-2 634 (700-2) |

TALLULAH, LOUISIANA
Amdt 4 15SEP16

32°21'N-91°02'W

VICKSBURG TALLULAH RGNL (TVR)

RNAV (GPS) RWY 36

SC-4, 22 FEB 2024 to 21 MAR 2024

SC-4, 22 FEB 2024 to 21 MAR 2024