

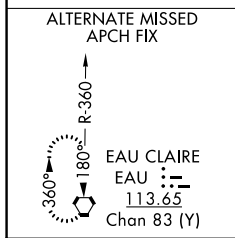
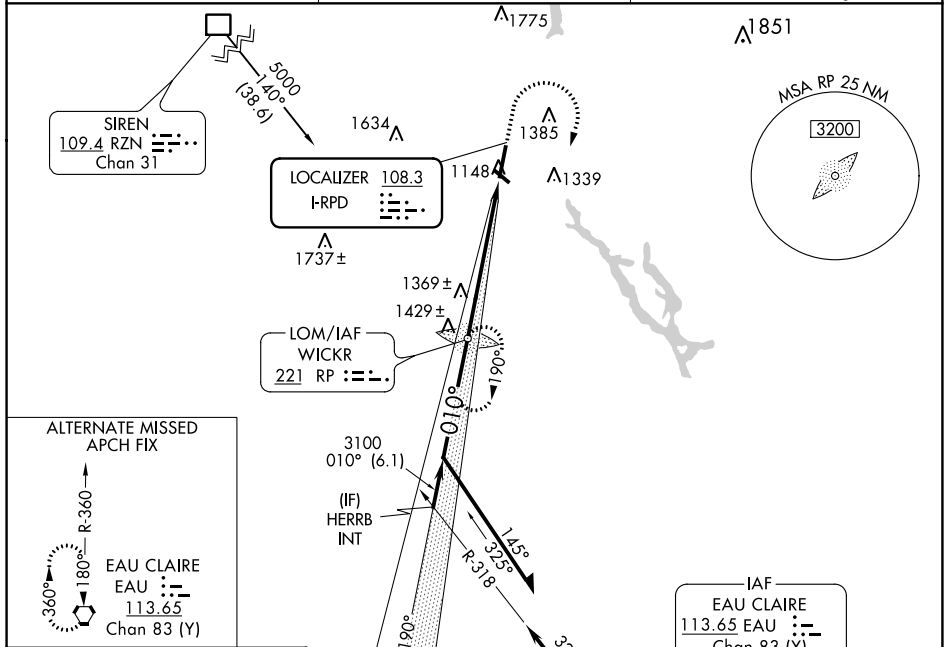
LOC I-RPD 108.3	APP CRS 010°	Rwy Idg 6500
		TDZE 1102
		Apt Elev 1109

ILS or LOC RWY 1

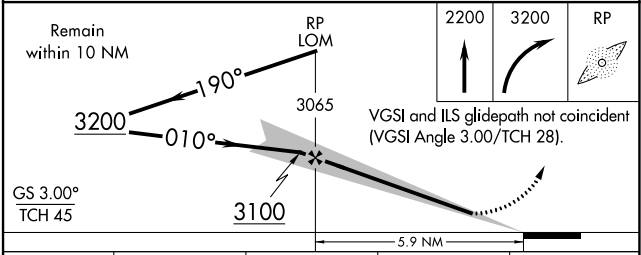
RICE LAKE RGNL/CARL'S FLD (R/PD)

ADF required. From RZN DME: RNAV 1-GPS required.	MALSR 	MISSED APPROACH: Climb to 2200 then climbing right turn to 3200 direct WICKR LOM and hold.
 Circling Rwy 13, 31 NA at night.		

AWOS-3 120.525	MINNEAPOLIS CENTER 125.3 335.6	UNICOM 122.7 (CTAF)
--------------------------	--	-------------------------------



ELEV 1109	TDZE 1102
REIL Rws 13, 31	
REIL Rwy 19	
HIRL Rwy 1-19	
MIRL Rwy 13-31	
FAF to MAP 5.9 NM	
Knots	60 90 120 150 180
Min:Sec	5:54 3:56 2:57 2:22 1:58



CATEGORY	A	B	C	D
S-ILS 1	1302-½		200 (200-½)	
S-LOC 1	1620-½	518 (600-½)	1620-1 518 (600-1)	1620-1¼ 518 (600-1¼)
<input checked="" type="checkbox"/> CIRCLING	1620-1 511 (600-1)	1740-1 631 (700-1)	1740-1¾ 631 (700-1¾)	1940-2¾ 831 (900-2¾)

EC-3, 22 FEB 2024 to 21 MAR 2024

EC-3, 22 FEB 2024 to 21 MAR 2024