

# SWABR ONE DEPARTURE (RNAV)

CTAF  
122.975  
REGIONAL DEP CON  
125.2 343.65

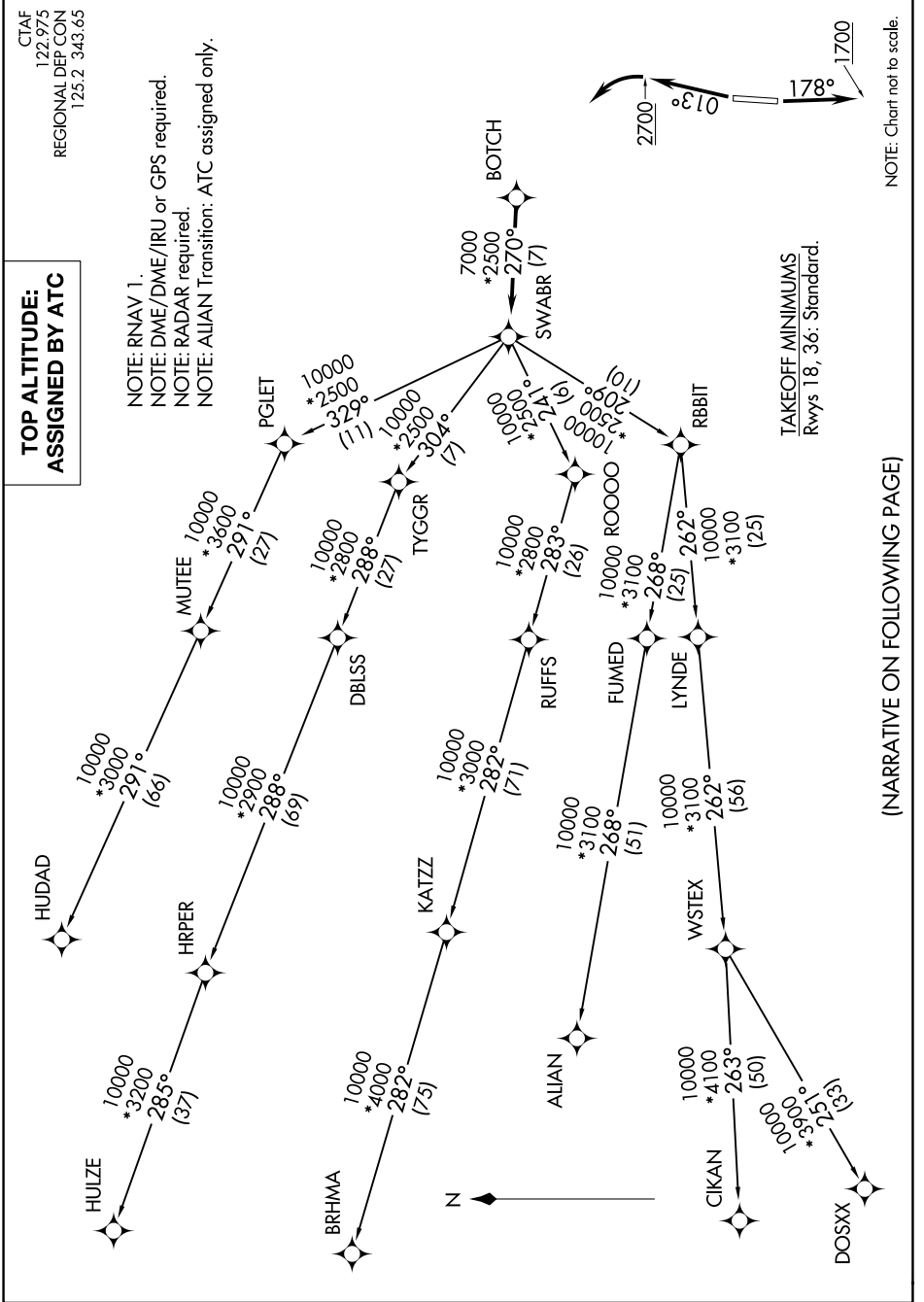
## TOP ALTITUDE: ASSIGNED BY ATC

NOTE: RNAV 1.  
NOTE: DME/DME/IRU or GPS required.  
NOTE: RADAR required.  
NOTE: ALIAN Transition: ATC assigned only.

TAKEOFF MINIMUMS  
Rwys 18, 36: Standard.

NOTE: Chart not to scale.

SC-2, 22 FEB 2024 to 21 MAR 2024



# SWABR ONE DEPARTURE (RNAV)

(NARRATIVE ON FOLLOWING PAGE)

SC-2, 22 FEB 2024 to 21 MAR 2024