

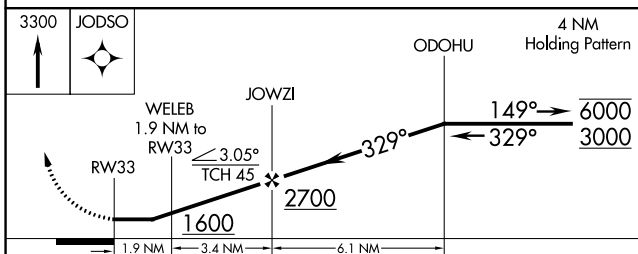
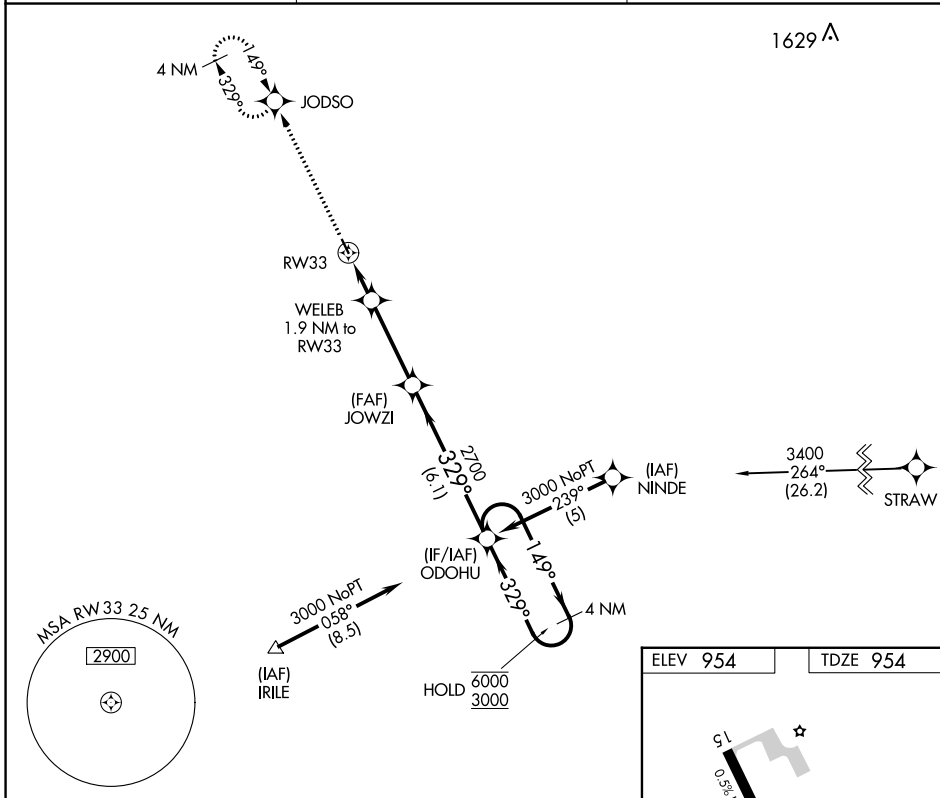
APP CRS <b>329°</b>	Rwy Idg TDZE Apt Elev	<b>3103</b> <b>954</b> <b>954</b>
------------------------	-----------------------------	---

# RNAV (GPS) RWY 33

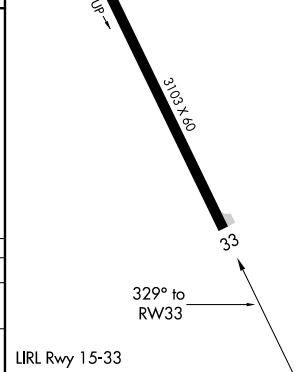
NORMAN COUNTY ADA/TWIN VALLEY (D00)

RNP APCH.	MISSED APPROACH: Climb to 3300 direct JODSO and hold, continue climb-in-hold to 3300.
Procedure NA at night. Rwy 33 helicopter visibility reduction below 1 SM NA. Use Hector Intl altimeter setting.	

FAR ASOS <b>124.5 379.2</b>	FARGO APP CON <b>120.4 377.15</b>	CTAF <b>122.9</b>
--------------------------------	--------------------------------------	----------------------



CATEGORY	A	B	C	D
LNVA MDA	1540-1	586 (600-1)	1540-1 $\frac{3}{4}$ 586 (600-1 $\frac{3}{4}$ )	NA
CIRCLING	1540-1 586 (600-1)	1580-1 626 (700-1)	1600-1 $\frac{3}{4}$ 646 (700-1 $\frac{3}{4}$ )	NA



NC-1, 22 FEB 2024 to 21 MAR 2024

NC-1, 22 FEB 2024 to 21 MAR 2024