

WAAS CH <b>42822</b> <b>W24A</b>	APP CRS <b>247°</b>	Rwy Idg TDZE Apt Elev	<b>5500</b> <b>665</b> <b>665</b>
--	------------------------	-----------------------------	---

# RNAV (GPS) RWY 24

SANDUSKY COUNTY RGNL (S24)

RNP APCH.

**NA** For uncompensated Baro-VNAV systems, LNAV/VNAV NA below -16°C (4°F) or above 54°C (130°F). Baro-VNAV and VDP NA when using Toledo Express altimeter setting. When local altimeter setting not received, use Toledo Express altimeter setting: increase LPV DA to 978 feet and all visibilities  $\frac{3}{8}$  SM; increase LNAV/VNAV DA to 1196 feet and all visibilities  $\frac{3}{8}$  SM; increase all MDA 100 feet and LNAV visibility Cat C and D  $\frac{1}{4}$  SM and Circling visibility Cat C and D  $\frac{1}{2}$  SM.

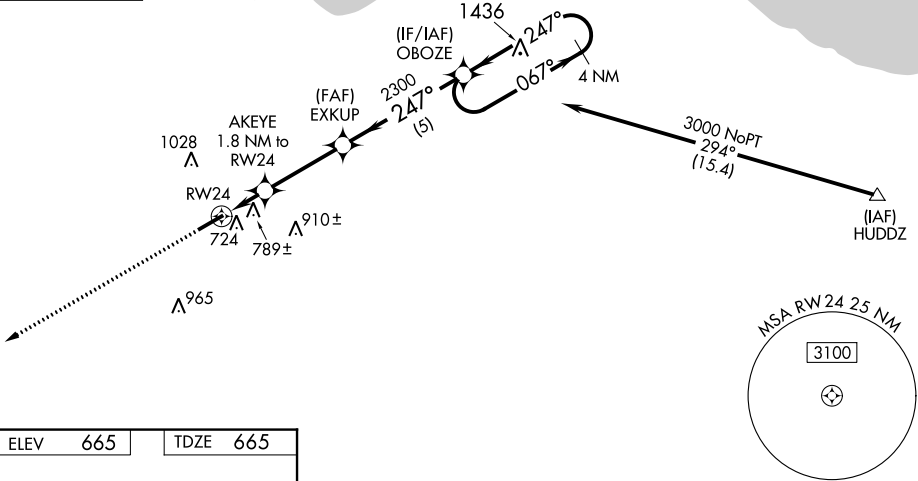
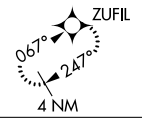
**MISSED APPROACH:**  
Climb to 3000 direct ZUFIL and hold.

AWOS-3P  
**119.575**

TOLEDO APP CON  
**126.1 307.0**

UNICOM  
**123.05 (CTAF) 0**

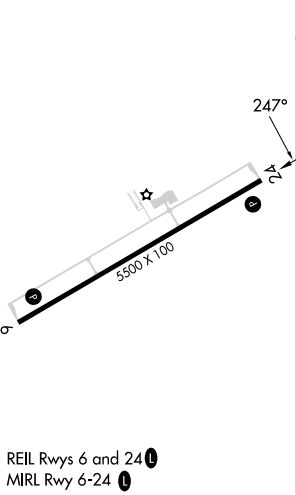
MISSED APCH FIX



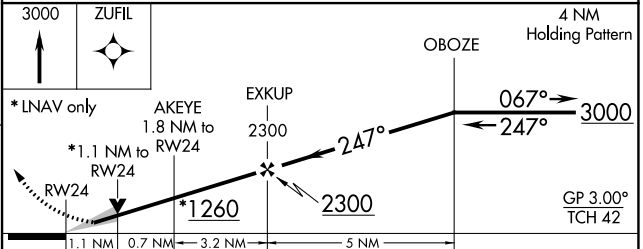
EC-2, 22 FEB 2024 to 21 MAR 2024

EC-2, 22 FEB 2024 to 21 MAR 2024

ELEV	665	TDZE	665
------	-----	------	-----



REIL Rws 6 and 24 **0**  
MIRL Rwy 6-24 **0**



CATEGORY	A	B	C	D
LPV DA		885- $\frac{3}{4}$	220 (300- $\frac{3}{4}$ )	
LNAV/VNAV DA		1103-1 $\frac{1}{2}$	438 (500-1 $\frac{1}{2}$ )	
LNAV MDA	1040-1	375 (400-1)	1040-1 $\frac{1}{8}$	375 (400-1 $\frac{1}{8}$ )
<b>C</b> CIRCLING	1120-1 455 (500-1)	1160-1 495 (500-1)	1380-2 715 (800-2)	1380-2 $\frac{1}{4}$ 715 (800-2 $\frac{1}{4}$ )