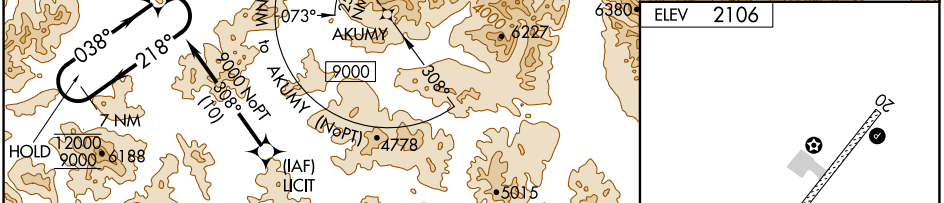
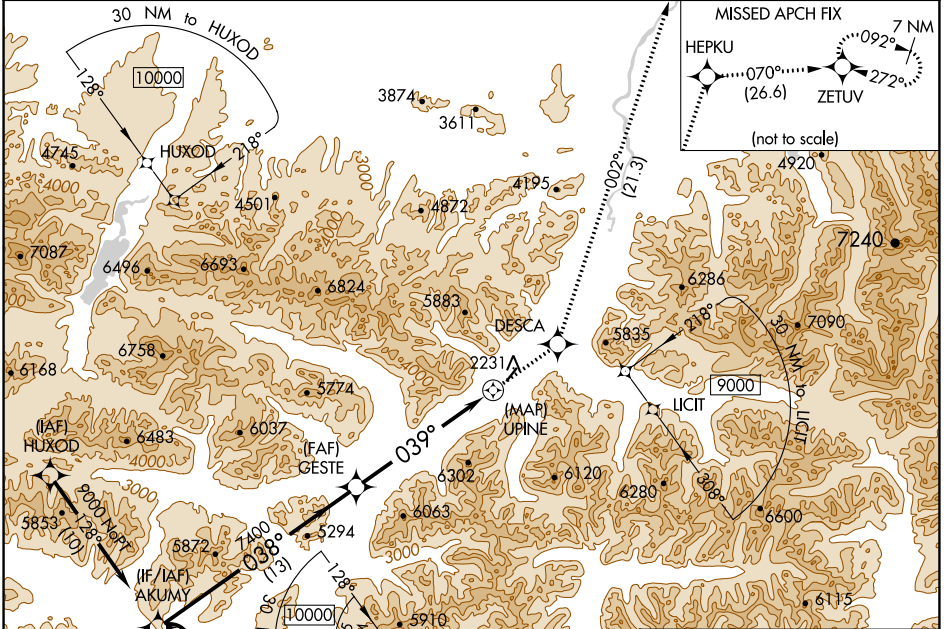


APP CRS	Rwy ldg	N/A
039°	TDZE	N/A
	Apt Elev	2106

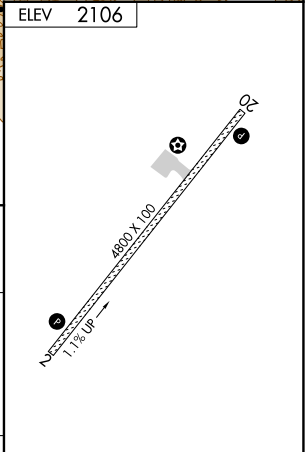
RNAV (GPS)-A

ANAKTUVUK PASS (AKP) (PAKP)

RNP APCH.		MISSED APPROACH: Climb to 10000 direct DESCA and on track 002° to HEPKU and track 070° to ZETUV and hold.	
<p>Circling NA west of Rwy 2-20. -2°C</p>			
AWOS-3P	ANCHORAGE CENTER	FAIRBANKS RADIO	UNICOM
135.75	124.6 352.0	122.15	122.8 (CTAF)



7 NM Holding Pattern	AKUMY	10000	DESCA	tr 002°	HEPKU	tr 070°	ZETUV
12000 ← 218°							
9000 ← 038°							
			GESTE				
							UPINE



CATEGORY	A	B	C	D
CIRCLING	5620-1¼ 3514 (4000-1¼)	5620-1½ 3514 (4000-1½)	6240-3	4134 (4200-3)

MIRL Rwy 2-20
REIL Rws 2 and 20

AK, 25 JAN 2024 to 21 MAR 2024

AK, 25 JAN 2024 to 21 MAR 2024