

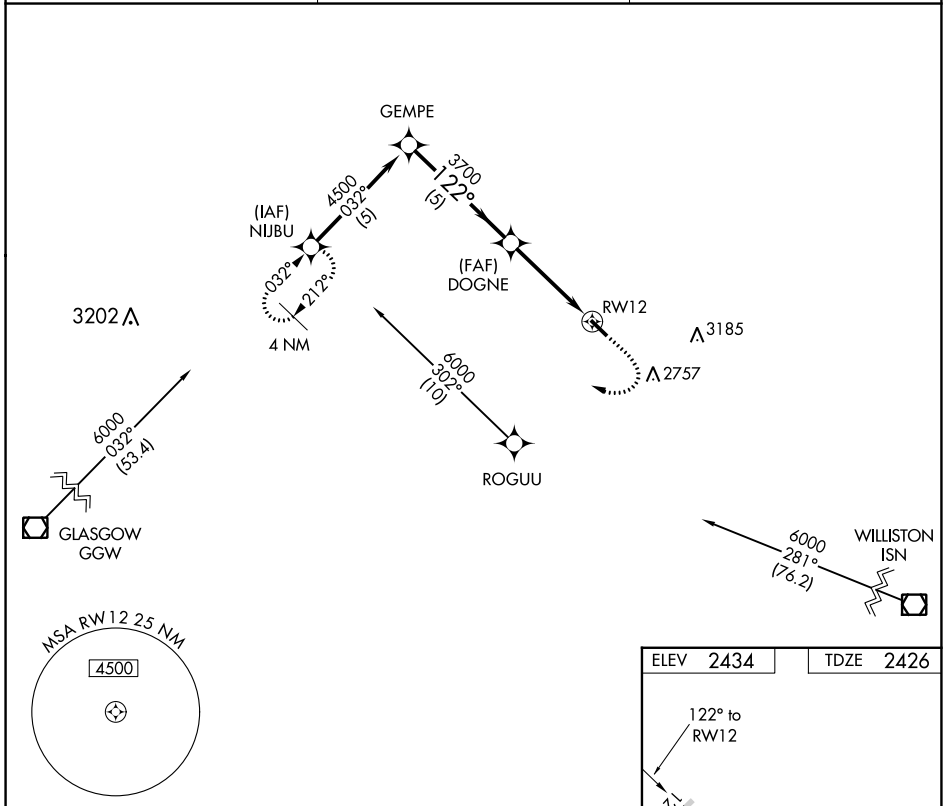
APP CRS <b>122°</b>	Rwy Idg <b>4020</b>
	TDZE <b>2426</b>
	Apt Elev <b>2434</b>

# RNAV (GPS) RWY 12

SCOBEY (9S2)

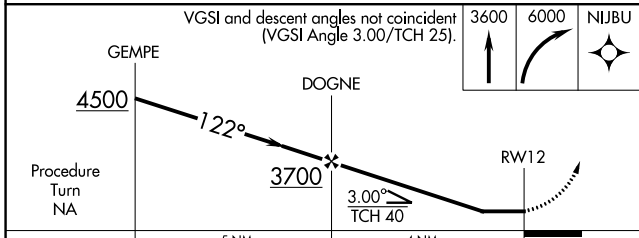
<p><b>▽</b> DME/DME RNP-0.3 NA. Use Wolf Point altimeter setting; when not received procedure not authorized.</p> <p><b>△</b> NA Helicopter visibility reduction below 3/4 SM NA.</p>	<p><b>MISSED APPROACH:</b> Climb to 3600 then climbing right turn to 6000 direct NIJBU WP and hold.</p>
---	---

OLF ASOS <b>118.325</b>	SALT LAKE CITY CENTER <b>126.85 305.2</b>	AUNICOM <b>122.8 (CTAF) 0</b>
----------------------------	--	----------------------------------

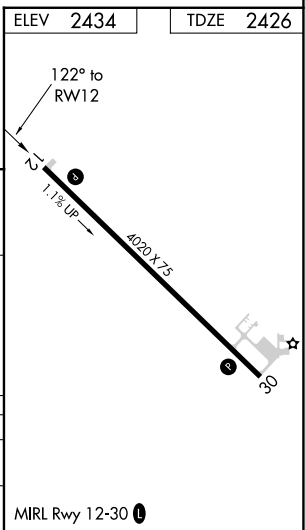


NW-1, 22 FEB 2024 to 21 MAR 2024

NW-1, 22 FEB 2024 to 21 MAR 2024



CATEGORY	A	B	C	D
LNVA MDA	3100-1	674 (700-1)		NA
CIRCLING	3100-1 666 (700-1)	3160-1 726 (800-1)		NA



MIRL Rwy 12-30 0