

WAAS CH <b>69544</b> <b>W30A</b>	APP CRS <b>296°</b>	Rwy Idg TDZE Apt Elev	<b>5000</b> <b>610</b> <b>625</b>
--	------------------------	-----------------------------	---

# RNAV (GPS) RWY 30

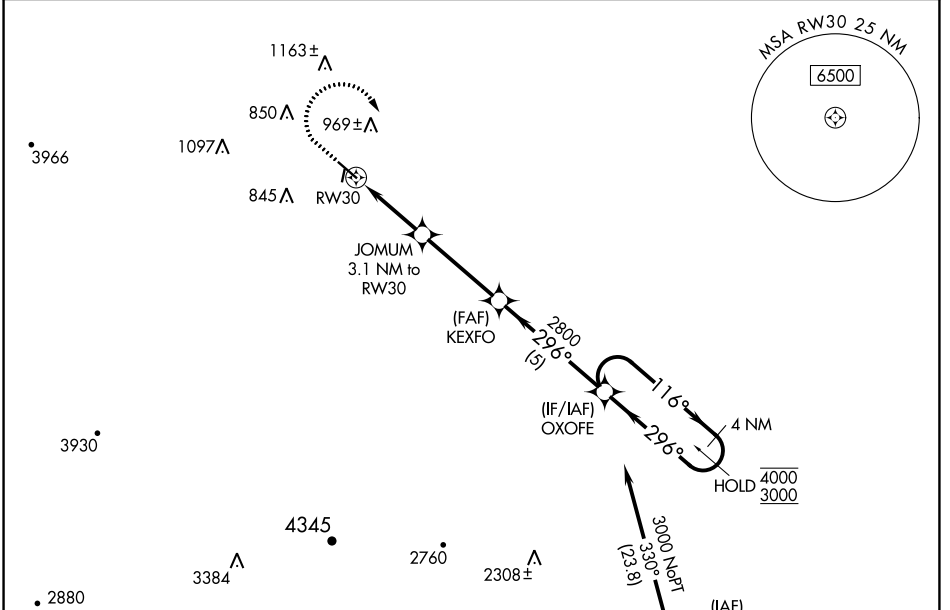
NEW COALINGA MUNI (C80)

RNP APCH - GPS.

**⚠** Circling to Rwy 1, 19 NA at night. For uncompensated Baro-VNAV systems, LNAV/VNAV NA below -16°C or above 54°C.

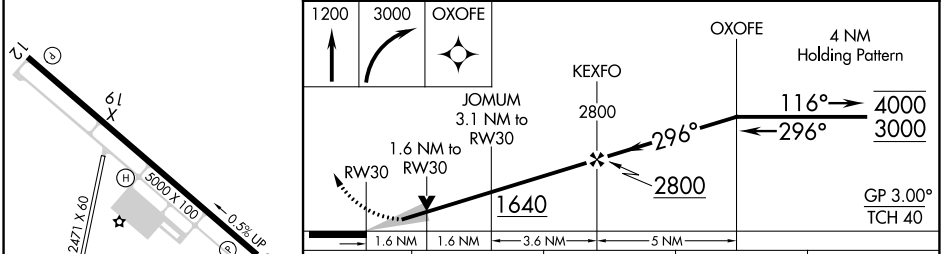
**⚠** MISSED APPROACH: Climb to 1200, then climbing right turn to 3000 direct OXOFE and hold.

AWOS-3 <b>119.275</b>	OAKLAND CENTER <b>128.7 307.0</b>	UNICOM <b>122.7 (CTAF) 0</b>
--------------------------	--------------------------------------	---------------------------------



ELEV 625	TDZE 610
----------	----------

Procedure NA for arrival on AVE VOR/DME airway radials 257 CW 313.



CATEGORY	A	B	C	D
LPV DA	936-1 326 (400-1)			
LNAV/VNAV DA	1030-1½ 420 (500-1½)			
LNAV MDA	1140-1	530 (600-1)	1140-1½	530 (600-1½)
CIRCLING	1160-1	1320-1	1420-2¼	1700-3
	535 (600-1)	695 (700-1)	795 (800-2¼)	1075 (1100-3)

SW-2, 22 FEB 2024 to 21 MAR 2024

SW-2, 22 FEB 2024 to 21 MAR 2024

MIRL Rwy 12-30 **0**  
REIL Rwy 12 and 30 **0**