

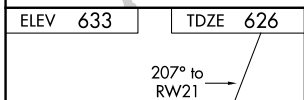
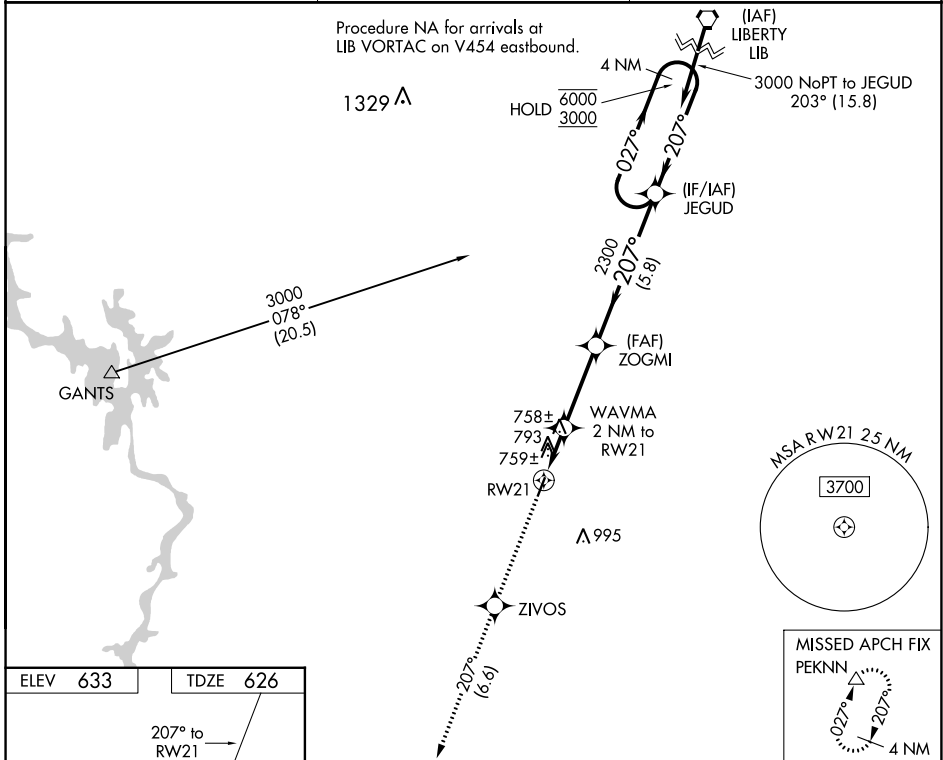
WAAS CH 72935 W21A	APP CRS 207°	Rwy Idg TDZE 626 Apt Elev 633
--	------------------------	---

RNAV (GPS) RWY 21

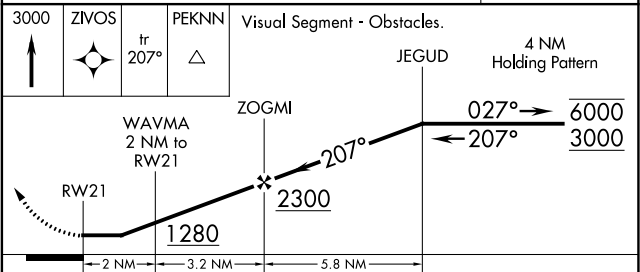
MONTGOMERY COUNTY (43A)

RNP APCH-GPS.	MISSED APPROACH: Climb to 3000 direct ZIVOS and on track 207° to PEKNN and hold.
<p>▼ Rwy 21 helicopter visibility reduction below 1 SM NA. Use Asheboro altimeter setting; when not received, use Albemarle altimeter setting. Procedure NA at night.</p> <p>▲ NA</p>	

HBI AWOS-3 119.275	FAYETTEVILLE APP CON 127.8 343.725	UNICOM 122.8 (CTAF) 0
------------------------------	--	---------------------------------



ELEV 633	TDZE 626
<p>MIRL Rwy 3-21 0</p>	



CATEGORY	A	B	C	D
LP MDA	1060-1	434 (500-1)		NA
LNAV MDA	1100-1	474 (500-1)		NA
<input checked="" type="checkbox"/> CIRCLING	1240-1 607 (700-1)	1340-1 707 (800-1)		NA