

APP CRS	Rwy Idg	N/A
331°	TDZE	N/A
	Apt Elev	63

RNAV (GPS)-A

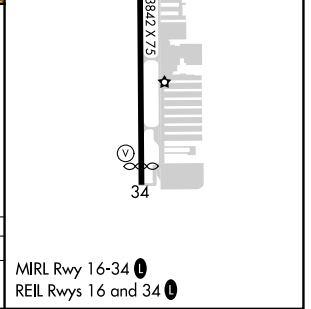
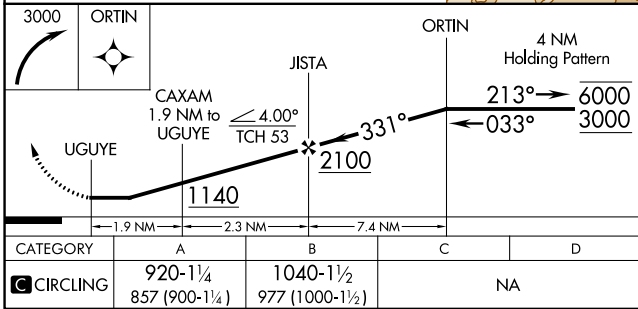
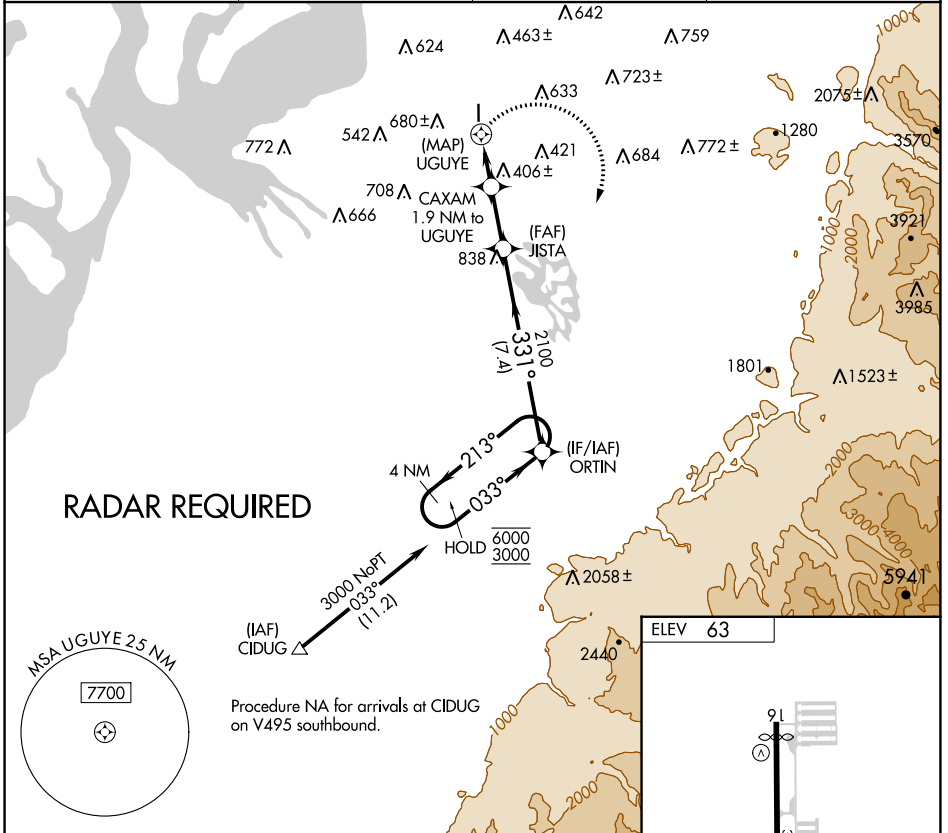
AUBURN MUNI (S5 \emptyset)

RNP APCH - GPS.

NA Circling NA west of Rwy 16-34. Rwy 16, 34 helicopter visibility reduction below 1 SM NA. Use Seattle-Tacoma Intl altimeter setting. When Circling to Rwy 16, 34 at night, operational VGSI required, remain on or above VGSI glidepath until threshold. Procedure NA at night when VGSI inop.

MISSED APPROACH: Climbing right turn to 3000 direct ORTIN and hold.

SEA ASOS	SEATTLE APP CON	CLNC DEL	UNICOM
118.0	123.85	123.85	122.975 (CTAF) \emptyset



CATEGORY	A	B	C	D
CIRCLING	920-1¼ 857 (900-1¼)	1040-1½ 977 (1000-1½)	NA	

MIRL Rwy 16-34 \emptyset
REIL Rws 16 and 34 \emptyset

NW-1, 22 FEB 2024 to 21 MAR 2024

NW-1, 22 FEB 2024 to 21 MAR 2024