

WAAS CH <b>53718</b> <b>W35A</b>	APP CRS <b>353°</b>	Rwy Idg TDZE <b>226</b> Apt Elev <b>240</b>	<b>5001</b>
--	------------------------	---	-------------

# RNAV (GPS) RWY 35

MILLEN (2J5)

RNP APCH.

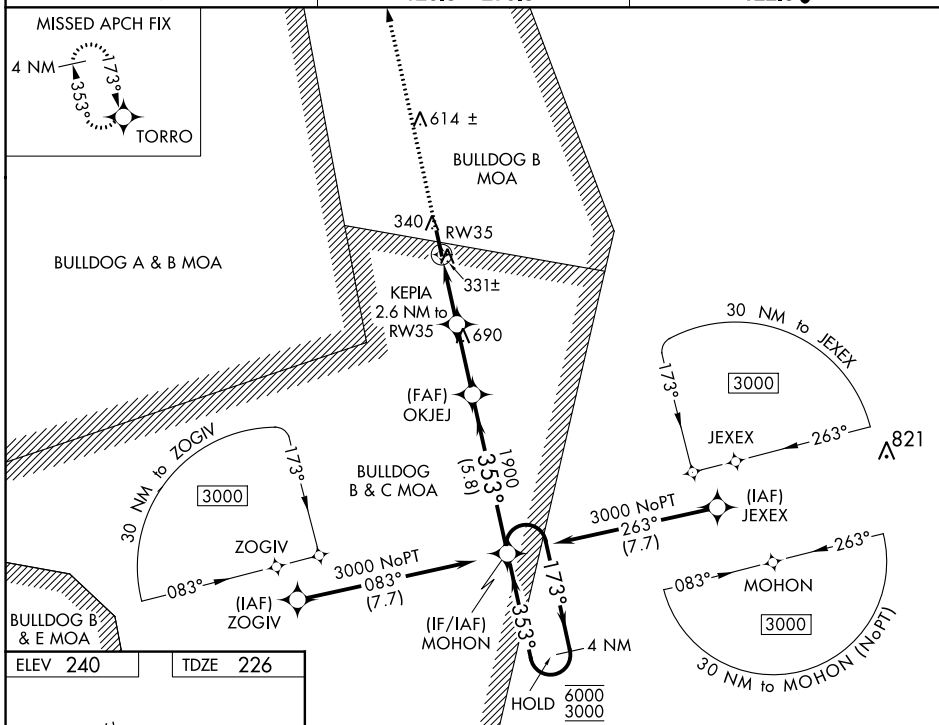
**⚠** Circling NA east of Rwy 17-35. For uncompensated Baro-VNAV systems, LNAV/VNAV NA below -15°C or above 54°C. Rwy 35 helicopter visibility reduction below 3/4 SM NA. Circling Rwy 17 NA at night.

**MISSED APPROACH:**  
Climb to 3000 direct TORRO and hold.

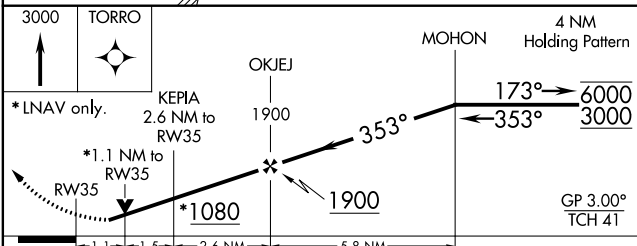
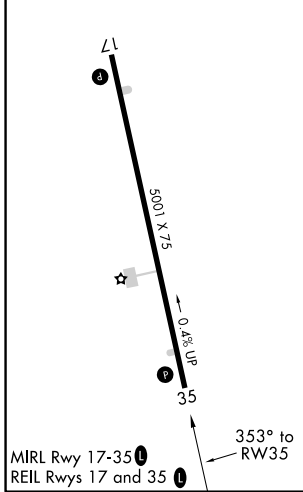
AWOS-3PT  
**120.2**

AUGUSTA APP CON \*  
**126.8 270.3**

CTAF  
**122.90**



ELEV 240	TDZE 226
----------	----------



CATEGORY	A	B	C	D
LPV DA		476-1	250 (300-1)	
LNAV/VNAV DA		633-1 1/8	407 (400-1 1/8)	
LNAV MDA		600-1	374 (400-1)	
<b>C</b> CIRCLING	680-1 440 (500-1)	700-1 460 (500-1)	700-1 1/2 460 (500-1 1/2)	1040-2 1/2 800 (800-2 1/2)

SE-4, 22 FEB 2024 to 21 MAR 2024

SE-4, 22 FEB 2024 to 21 MAR 2024