

WAAS CH 72632 W31A	APP CRS 306°	Rwy Idg TDZE Apt Elev	5500 1126 1126
--	------------------------	-----------------------------	---

RNAV (GPS) RWY 31

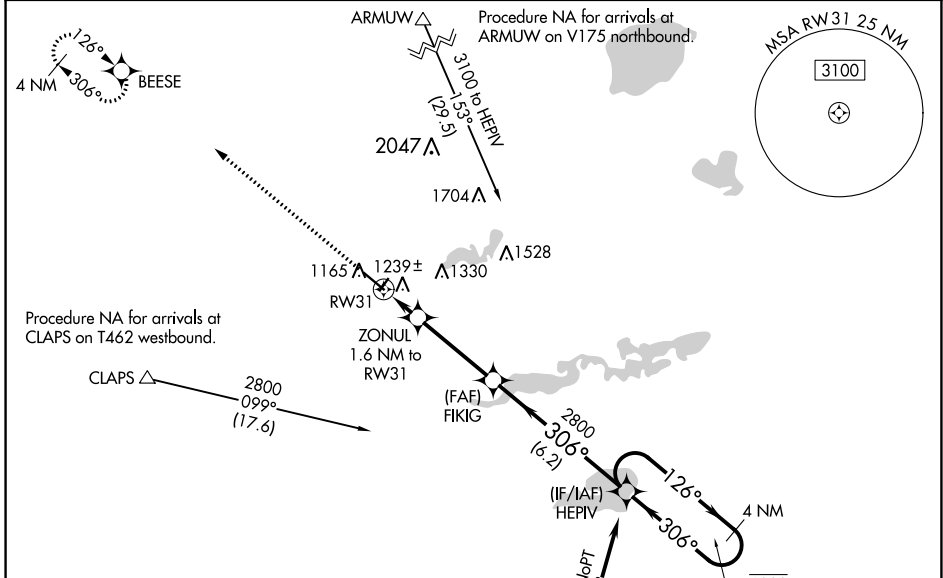
WILLMAR MUNI/JOHN L RICE FLD (BDH)

RNP APCH - GPS.

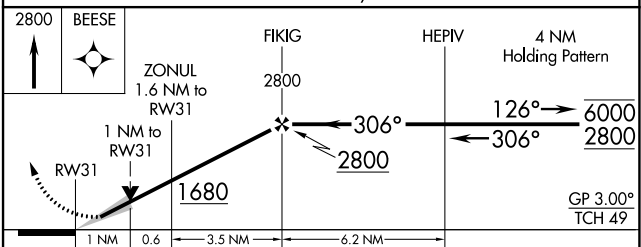
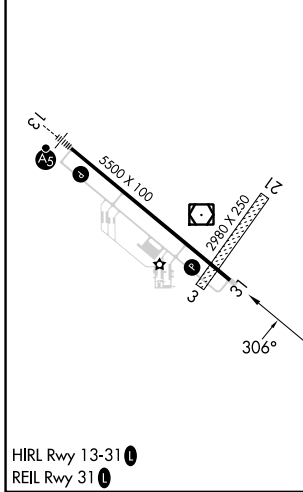
⚠ For uncompensated Baro-VNAV systems, LNAV/VNAV NA below -17°C or above 54°C. When local altimeter setting not received, use Olivia altimeter setting; increase LPV DA to 1381 feet; increase LNAV/VNAV DA to 1475 feet and all visibilities $\frac{1}{8}$ SM; increase all MDAs 60 feet and LNAV visibility Cat C and D $\frac{1}{4}$ SM. Baro-VNAV and VDP NA when using Olivia Rgnl altimeter setting.

MISSED APPROACH: Climb to 2800 direct BEESE and hold.

AWOS-3PT 118.75	MINNEAPOLIS CENTER 125.5 323.1	UNICOM 122.8 (CTAF)
---------------------------	--	-------------------------------



ELEV 1126	TDZE 1126
-----------	-----------



CATEGORY	A	B	C	D
LPV DA		1326- $\frac{3}{4}$	200 (200- $\frac{3}{4}$)	
LNAV/VNAV DA		1420- $\frac{3}{4}$	294 (300- $\frac{3}{4}$)	
LNAV MDA		1500-1	374 (400-1)	

NC-1, 22 FEB 2024 to 21 MAR 2024

NC-1, 22 FEB 2024 to 21 MAR 2024