

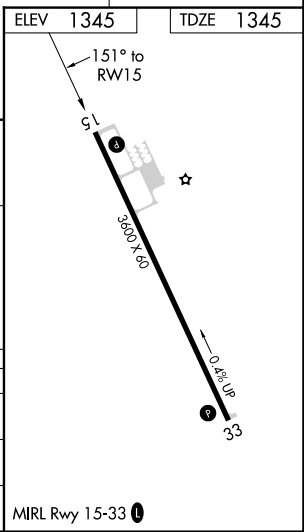
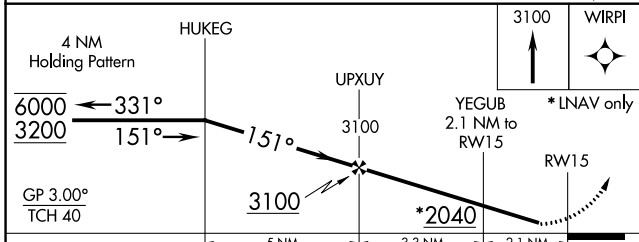
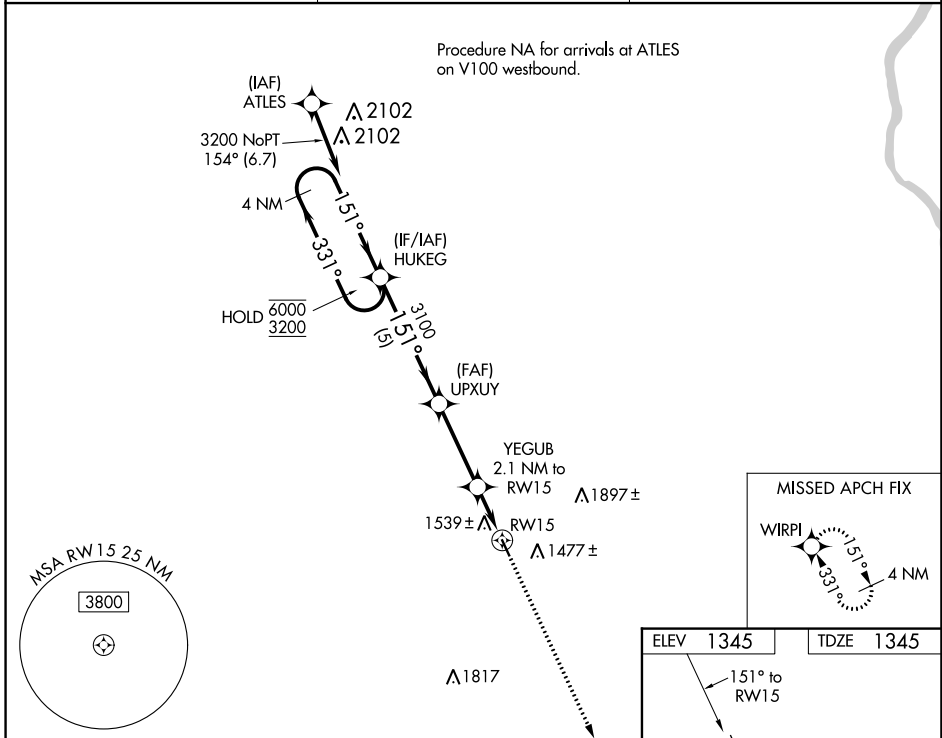
WAAS CH 99327 W15A	APP CRS 151°	Rwy Idg TDZE Apt Elev	3600 1345 1345
--	------------------------	-----------------------------	---

RNAV (GPS) RWY 15

PENDER MUNI (ØC4)

RNP APCH.		MISSED APPROACH: Climb to 3100 direct WIRPI and hold.
<p>▼ Rwy 15 helicopter visibility reduction below 3/4 SM NA. Baro-VNAV NA. Use Wayne altimeter setting; when not received, use Sioux City altimeter setting: increase LPV DA to 1722 feet, LNAV/VNAV DA to 1934 feet and all MDAs 60 feet.</p>		

LCG AWOS-3 120.125	SIOUX CITY APP CON * 124.6 307.0	CTAF 122.9
------------------------------	--	----------------------



		5 NM		3.3 NM		2.1 NM	
CATEGORY		A	B	C	D		
LPV DA		1678-1	333 (400-1)			NA	
LNAV/VNAV DA		1890-17/8	545 (600-17/8)			NA	
LNAV MDA		1840-1	495 (500-1)			NA	

NC-2, 22 FEB 2024 to 21 MAR 2024

NC-2, 22 FEB 2024 to 21 MAR 2024