

WAAS CH 72627 W33A	APP CRS 331°	Rwy Idg TDZE Apt Elev	3600 1343 1345
--	------------------------	-----------------------------	---

RNAV (GPS) RWY 33

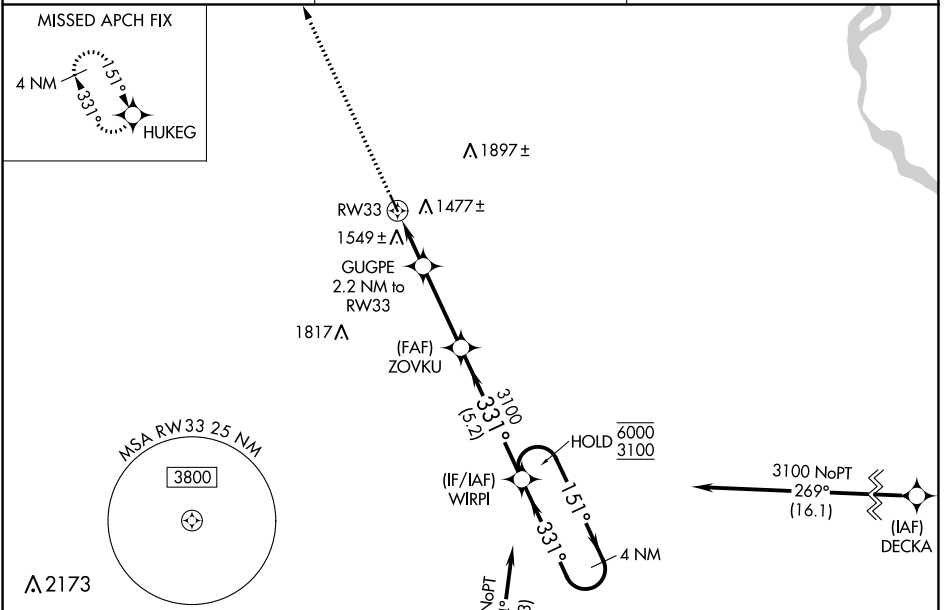
PENDER MUNI (ØC4)

RNP APCH.

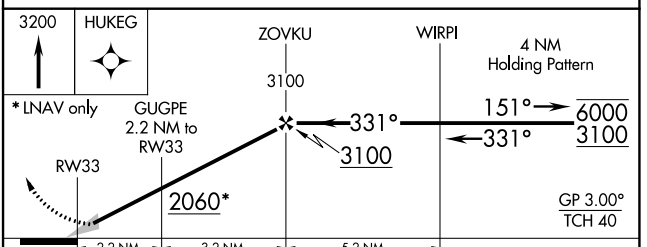
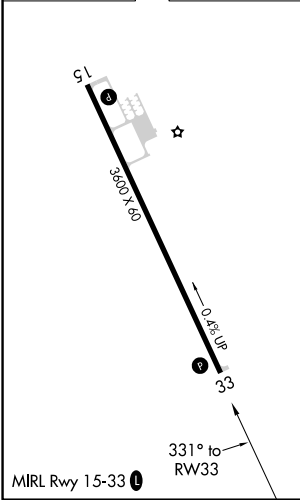
Baro-VNAV NA. Use Wayne altimeter setting; when not received, use Sioux City altimeter setting: increase LPV DA to 1681 feet and LNAV/VNAV DA to 1972 feet and all MDAs 60 feet.

MISSED APPROACH: Climb to 3200 direct HUKEG and hold.

LCG AWOS-3 120.125	SIOUX CITY APP CON * 124.6 307.0	CTAF 122.9
------------------------------	--	----------------------



ELEV 1345	TDZE 1343
-----------	-----------



CATEGORY	A	B	C	D
LPV DA	1637-1	294 (300-1)		NA
LNAV/VNAV DA	1928-2	585 (600-2)		NA
LNAV MDA	1860-1	517 (600-1)		NA

NC-2, 22 FEB 2024 to 21 MAR 2024

NC-2, 22 FEB 2024 to 21 MAR 2024